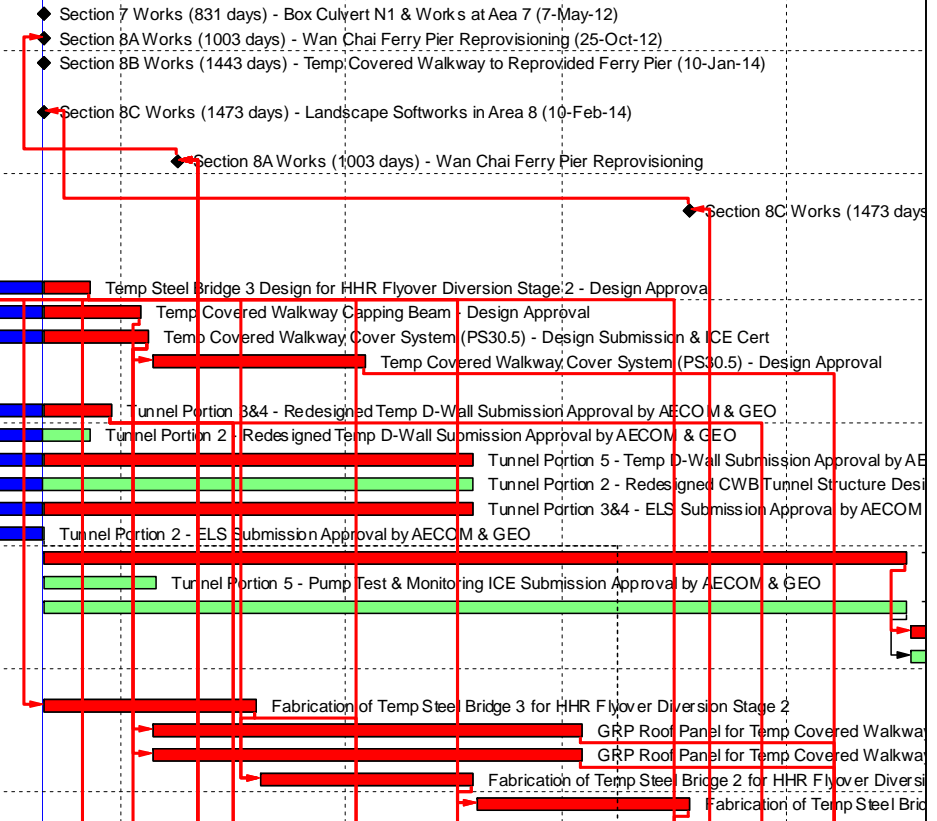




Activity ID	Activity Name	OD	RD	Start	Finish	Total Float	Calendar	2014					
								Apr 52	May 53	Jun 54	Jul 55	Aug 56	
<b>Wan Chai Development Phase II - Central - Wan Chai Bypass at Wan Chai East (dd 20-Apr-14)</b>													
<b>Programme Milestones (Revised up to EOTO No.10 Issued on 29-Nov-13)</b>													
<b>Contractual Completion Dates</b>													
KDC0110	Section 7 Works (831 days) - Box Culvert N1 & Works at Aea 7 (7-May-12)	0	0	20-Apr-14	20-Apr-14*	-712	Calendar Day						
KDC0120	Section 8A Works (1003 days) - Wan Chai Ferry Pier Re-provisioning (25-Oct-12)	0	0	20-Apr-14	20-Apr-14*	-541	Calendar Day						
KDC0130	Section 8B Works (1443 days) - Temp Covered Walkway to Re-provided Ferry Pier (10-Jan-14)	0	0	20-Apr-14	20-Apr-14*	-99	Calendar Day						
<b>Soft Landscaping &amp; Establishment Key Dates</b>													
KDC0140	Section 8C Works (1473 days) - Landscape Softworks in Area 8 (10-Feb-14)	0	0	20-Apr-14	20-Apr-14*	-68	Calendar Day						
<b>Forecast Completion Dates</b>													
KDF0120	Section 8A Works (1003 days) - Wan Chai Ferry Pier Re-provisioning	0	0	08-May-14	18-Jul-14	-158	Calendar Day						
<b>Soft Landscaping &amp; Establishment Key Dates</b>													
KDF0140	Section 8C Works (1473 days) - Landscape Softworks in Area 8	0	0	18-Jul-14	18-Jul-14	-158	Calendar Day						
<b>Preliminaries</b>													
<b>Critical Submission &amp; Approval</b>													
PRE-SUB-1030B	Temp Steel Bridge 3 Design for HHR Flyover Diversion Stage 2 - Design Approval	60	7	25-May-13 A	26-Apr-14	-367	Calendar Day						
PRE-SUB-1000B	Temp Covered Walkway Capping Beam - Design Approval	30	14	19-Jun-13 A	03-May-14	-421	Calendar Day						
PRE-SUB-1010A	Temp Covered Walkway Cover System (PS30.5) - Design Submission & ICE Cert	90	15	18-Oct-13 A	04-May-14	-411	Calendar Day						
PRE-SUB-1010B	Temp Covered Walkway Cover System (PS30.5) - Design Approval	30	30	05-May-14	03-Jun-14	-411	Calendar Day						
<b>CSD for CWB Tunnel</b>													
PRE-CSD-3000B	Tunnel Portion 3&4 - Redesign Temp D-Wall Submission Approval by AECOM & GEO	30	10	08-Jun-13 A	29-Apr-14	-354	Calendar Day						
PRE-CSD-2000B	Tunnel Portion 2 - Redesign Temp D-Wall Submission Approval by AECOM & GEO	30	7	19-Jul-13 A	26-Apr-14	1573	Calendar Day						
PRE-CSD-5000B	Tunnel Portion 5 - Temp D-Wall Submission Approval by AECOM & GEO	60	60	15-Aug-13 A	18-Jun-14	-15	Calendar Day						
PRE-CSD-2030B	Tunnel Portion 2 - Redesign CWB Tunnel Structure Design Submission Approval by AECOM	60	60	16-Nov-13 A	18-Jun-14	233	Calendar Day						
PRE-CSD-3010B	Tunnel Portion 3&4 - ELS Submission Approval by AECOM & GEO	60	60	17-Jan-14 A	18-Jun-14	-77	Calendar Day						
PRE-CSD-2010B	Tunnel Portion 2 - ELS Submission Approval by AECOM & GEO	60	0	30-Jan-14 A	20-Apr-14	130	Calendar Day						
PRE-CSD-5010A	Tunnel Portion 5 - ELS ICE Submission	120	120	20-Apr-14	17-Aug-14	-18	Calendar Day						
PRE-CSD-5020B	Tunnel Portion 5 - Pump Test & Monitoring ICE Submission Approval by AECOM & GEO	16	16	20-Apr-14	05-May-14	132	Calendar Day						
PRE-CSD-6010A	Tunnel Portion 6 - ELS ICE Submission	120	120	20-Apr-14	17-Aug-14	215	Calendar Day						
PRE-CSD-5010B	Tunnel Portion 5 - ELS Submission Approval by AECOM & GEO	60	60	18-Aug-14	16-Oct-14	-18	Calendar Day						
PRE-CSD-6010B	Tunnel Portion 6 - ELS Submission Approval by AECOM & GEO	60	60	18-Aug-14	16-Oct-14	215	Calendar Day						
<b>Critical Procurement &amp; Site Delivery</b>													
PRE-PRO-1200C	Fabrication of Temp Steel Bridge 3 for HHR Flyover Diversion Stage 2	30	30	20-Apr-14	19-May-14	-367	Calendar Day						
PRE-PRO-1100A	GRP Roof Panel for Temp Covered Walkway (Type 1)	60	60	05-May-14	03-Jul-14	-381	Calendar Day						
PRE-PRO-1100B	GRP Roof Panel for Temp Covered Walkway (Type 2)	60	60	05-May-14	03-Jul-14	-381	Calendar Day						
PRE-PRO-1200B	Fabrication of Temp Steel Bridge 2 for HHR Flyover Diversion Stage 2	30	30	20-May-14	18-Jun-14	-367	Calendar Day						
PRE-PRO-1200A	Fabrication of Temp Steel Bridge 1 for HHR Flyover Diversion Stage 2	30	30	19-Jun-14	18-Jul-14	-367	Calendar Day						
<b>Section 3 of the Works - Re-provisioning of Government Helipad and Public Toilet</b>													
<b>Outstanding Works</b>													
S3-0070-1499	Reinstatement of armour rock, retaining walls & new covered walkway along Expo Drive East	254	28	11-Aug-12 A	26-May-14	1241	HK Working Day						
<b>Section 4A of the Works - Cooling Water Pumping System for Sun Hung Kai Centre (P8)</b>													
<b>Cooling Mains Work above Tunnel Portion &amp; connecting to Pump Station</b>													
S4A-0900	Outstanding Works	365	302	16-Feb-14 A	15-Feb-15	1278	Calendar Day						
<b>Section 4B of the Works - Cooling Water Pumping System for China Resources Building (P9)</b>													
<b>Cooling Mains Work within Hoarding Area</b>													
Zone 4A Pipe Installation CHAI 080-160		6	6	22-Apr-14	28-Apr-14	1263	HK Working Day						
S4B-0060-180	Reinstatement	6	6	22-Apr-14	28-Apr-14	1263	HK Working Day						
<b>Cooling Mains Work at Junction between Convention Avenue and Tonnochy Road</b>													
Zone 4B-1& 4B-2 Pipe Installation CHAI 170-160		3	3	22-Apr-14	24-Apr-14	1266	HK Working Day						
S4B-0060-300	Reinstatement	3	3	22-Apr-14	24-Apr-14	1266	HK Working Day						
<b>Cooling Mains Work above Tunnel Portion &amp; connecting to Pump Station</b>													
S4B-0900	Outstanding Works	365	164	01-Oct-13 A	30-Sep-14	1416	Calendar Day						
<b>Section 4C of the Works - Cooling Water Pumping System for Great Eagle Centre / Harbour Centre (P7)</b>													
<b>Cooling Mains Work within Hoarding Area CHAG 210-150</b>													
S4C-0060-150	Reinstatement	6	6	22-Apr-14	28-Apr-14	1263	HK Working Day						
<b>Cooling Mains Work at Junction between Convention Avenue and Tonnochy Road</b>													
Zone 4B-1& 4B-2 Pipe Installation CHAG 210-220		3	3	22-Apr-14	24-Apr-14	1266	HK Working Day						
S4C-0060-240	Reinstatement	3	3	22-Apr-14	24-Apr-14	1266	HK Working Day						
<b>Cooling Mains Work above Tunnel Portion &amp; connecting to Pump Station</b>													
S4C-0900	Outstanding Works	365	215	21-Nov-13 A	20-Nov-14	1365	Calendar Day						
<b>Section 5 of the Works - WSD Salt Water Pumping System</b>													
<b>WSD Salt Water Pumping Station</b>													
<b>Builder and E&amp;M works for WSD's pumping station</b>													
<b>Finishing works</b>													
S5-0060-1801	Metal Works & Misc. Works	282	30	06-Jun-12 A	28-May-14	1239	HK Working Day						
<b>Salt Water Intake Culvert Construction</b>													
Bay 6 - Bay 18: Ex-Pet Garden & Hung Hing Road		23	7	20-Apr-13 A	29-Apr-14	-581	HK Working Day						
S5-100-3333	Backfilling to Bay 6 to Bay 11 (2,000m3; 150m3/d)	23	7	20-Apr-13 A	29-Apr-14	-581	HK Working Day						
<b>Overall Testing &amp; Commissioning of Re-provisioned Salt Water Intake System</b>													
S5-0900	Outstanding Works	365	320	06-Mar-14 A	05-Mar-15	1260	Calendar Day						



**CHUN WO - CRGL JOINT VENTURE**

Legend:

- Remaining Work (Green bar)
- Actual Work (Blue bar)
- Summary Bar (Orange bar)
- Critical Remaining Work (Red bar)
- Milestone (Diamond)

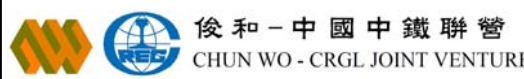
**CEDD CONTRACT NO. HK/2009/02**

**Wan Chai Development Phase II - Central-Wan Chai Bypass at Wan Chai East (Contract 2)**

**3-MONTH ROLLING PROGRAMME (dd 20-Apr-14)**

Date	Revision	Checked	Approved
20-Apr-14	3MRP		
20-Feb-14	Baseline Prog		

Activity ID	Activity Name	OD	RD	Start	Finish	Total Float	Calendar	2014							
								Apr 52	May 53	Jun 54	Jul 55	Aug 56			
<b>Section 7 of the Works - Box Culvert N1 &amp; Flood Relief System</b>															
<b>Box Culvert and Flood Relief System Construction</b>															
S7-191212-260	Backfilling for 1050mm FRP installation & Strut Removal	4	4	22-Apr-14	26-Apr-14	-213	HK Working Day								
<b>Works in Area 7</b>															
S7-1200	Strut S3 Removal	7	7	09-Apr-14 A	26-Apr-14	-1066	Calendar Day								
S7-1000	Load Transfer for King Post to Completed Roof Slab	14	14	27-Apr-14	10-May-14	-1066	Calendar Day								
S7-1100	Tunnel Portion 1 Backfilling to Strut S3 Level (15,000m3; 2,000m3/d)	8	8	20-May-14	27-May-14	-1075	Calendar Day								
S7-1250	Backfill and SWIC Temp U/U Bridge Load Transfer (10,000m3; 2,000m3/d)	12	12	28-May-14	08-Jun-14	-1075	Calendar Day								
S7-1300	Tunnel Portion 1 Backfilling to Strut S2 Level (15,000m3; 2,000m3/d)	8	8	09-Jun-14	16-Jun-14	-1075	Calendar Day								
S7-1400	Strut S2 Removal	14	14	17-Jun-14	30-Jun-14	-1075	Calendar Day								
S7-1420	Sewage Outfall Temp U/U Bridge Load Transfer	7	7	01-Jul-14	07-Jul-14	-1075	Calendar Day								
S7-1500	Tunnel Portion 1 Backfilling to Strut S1 Level (25,000m3; 2,000m3/d)	13	13	08-Jul-14	20-Jul-14	-1075	Calendar Day								
S7-1600	Strut S1 Removal	7	7	21-Jul-14	27-Jul-14	-1075	Calendar Day								
S7-1620	Box Culvert N1 Temp U/U Bridge Load Transfer	7	7	21-Jul-14	27-Jul-14	-1075	Calendar Day								
S7-1640	Backfill and Cooling Mains Temp U/U Bridge Load Transfer (5,000m3; 2,000m3/d)	7	7	28-Jul-14	03-Aug-14	-1075	Calendar Day								
S7-1700	D-Wall Trimming, Drain Installation & Backfilling to Ground Level (13,500m3; 1,000m3/d)	21	21	04-Aug-14	24-Aug-14	-1075	Calendar Day								
<b>Transformer Building for Dining Services at Ferry Pier (VO116)</b>															
<b>Civil Works</b>															
S7-TB-2000	Lay 500mm thk. Rubble Mound	2	2	11-Aug-14	12-Aug-14	-861	HK Working Day								
S7-TB-2010	Blinding Layer	1	1	13-Aug-14	13-Aug-14	-861	HK Working Day								
S7-TB-2020	Base Slab Construction (9.3m x 4.9m x 1m thick)	7	7	14-Aug-14	21-Aug-14	-861	HK Working Day								
<b>Section 8A of the Works - Re-provisioning of Wan Chai Ferry Pier in Area 8</b>															
<b>ABWF &amp; E&amp;M Installation</b>															
S8A-BS-0400	Fender Flat Pads Preparation & Installation	40	3	14-Feb-14 A	24-Apr-14	-183	HK Working Day								
S8A-BS-0410	I Beam & Fender Panel Installation	54	42	29-Mar-14 A	12-Jun-14	-208	HK Working Day								
<b>Specific Procurement</b>															
S8A-BS-0280B	E&M - ELV System (Misc.)	60	30	29-May-13 A	19-May-14	-299	Calendar Day								
<b>Level 1</b>															
<b>Public Area</b>															
S8A-BS-1000	ABWF Works, Plumbing & E&M First Fix	132	7	17-Dec-12 A	29-Apr-14	-197	HK Working Day								
S8A-BS-1070	E&M Final Fix	15	15	05-Sep-13 A	04-May-14	-376	Calendar Day								
<b>Ticket Room, Changing Room &amp; Storing Room</b>															
S8A-BS-1860	ELV System Installation (Emergency Bell System)	30	5	08-Oct-13 A	24-Apr-14	-258	Calendar Day								
S8A-BS-1870	T&C	14	14	25-Apr-14	08-May-14	-258	Calendar Day								
<b>Toilet</b>															
S8A-BS-1170	E&M Final Fix	14	14	05-Sep-13 A	07-May-14	-257	Calendar Day								
S8A-BS-1160	Sanitary Equipment	28	18	10-Jan-14 A	07-May-14	-257	Calendar Day								
<b>Lift</b>															
S8A-BS-1440	T&C	7	7	09-Jan-14 A	26-Apr-14	-267	Calendar Day								
<b>Metalworks</b>															
S8A-BS-1640	G3 Glass Panel Installation	15	7	07-Aug-13 A	26-Apr-14	-246	Calendar Day								
S8A-BS-1630	SS Balustrade Post & Frame Installation	24	3	17-Oct-13 A	22-Apr-14	-242	Calendar Day								
<b>Level 2</b>															
<b>General Area</b>															
S8A-BS-2000	ABWF and E&M First Fix at Level 2 @ +7.70mPD	123	14	17-Dec-12 A	09-May-14	-180	HK Working Day								
<b>Toilet</b>															
S8A-BS-2150	Sanitary Equipment	10	5	30-Aug-13 A	24-Apr-14	-560	Calendar Day								
S8A-BS-2160	E&M Final Fix	14	14	25-Apr-14	08-May-14	-560	Calendar Day								
<b>Metalworks &amp; Glass Panel Installation</b>															
S8A-BS-2230	G3 Glass Panel Installation	14	10	06-Mar-08 A	29-Apr-14	-551	Calendar Day								
S8A-BS-2210	Glass Curtain Wall (Non-FRP) Installation (12mm/19mm thk.)	21	3	25-Jul-13 A	22-Apr-14	-544	Calendar Day								
<b>Level M</b>															
<b>Movable Ramp Machine Room</b>															
S8A-BS-3410	T&C	14	14	20-Mar-14 A	03-May-14	-555	Calendar Day								
<b>Cleaning/ Flushing Water Pump Room</b>															
S8A-BS-3620	T&C	7	7	20-Apr-14	26-Apr-14	-548	Calendar Day								
<b>Roof</b>															
S8A-BS-4010	E&M Installation	28	2	10-Sep-13 A	21-Apr-14	-543	Calendar Day								
<b>Works in Area 8 - ABWF Works at Observation Deck of Ferry Pier</b>															
S8B-FP-01200	Aluminium Cladding	95	10	26-Mar-13 A	29-Apr-14	-109	Calendar Day								
S8B-FP-01100	Roof Finishes & Misc. ABWF Installation	120	45	28-Oct-13 A	03-Jun-14	-144	Calendar Day								
S8B-FP-01300	Handrail & Glass Balustrade Installation	45	14	21-Dec-13 A	03-May-14	-113	Calendar Day								
<b>T&amp;C and Handover</b>															
S8A-TC-9000	Fitting Out Works by Star Ferry (PS36.03(4))	180	176	16-Apr-14 A	12-Oct-14	-415	Calendar Day								
S8A-TC-1500	EMSD Inspection for Lift	0	0	17-May-14	17-May-14	-211	HK Working Day								
S8A-TC-8000	ELV System Installation (Misc.)	30	30	20-May-14	18-Jun-14	-299	Calendar Day								
<b>Section 8B of the Works - Temporary Covered Walkway &amp; Works in Area 8</b>															
<b>Temporary Covered Walkway</b>															
S8B-TCW-01200B	Temp Covered Walkway Footing & Drawpits - GL1-7 (Type 3) near New Ferry Pier (Remaining)	30	28	18-Nov-13 A	26-May-14	-299	HK Working Day								



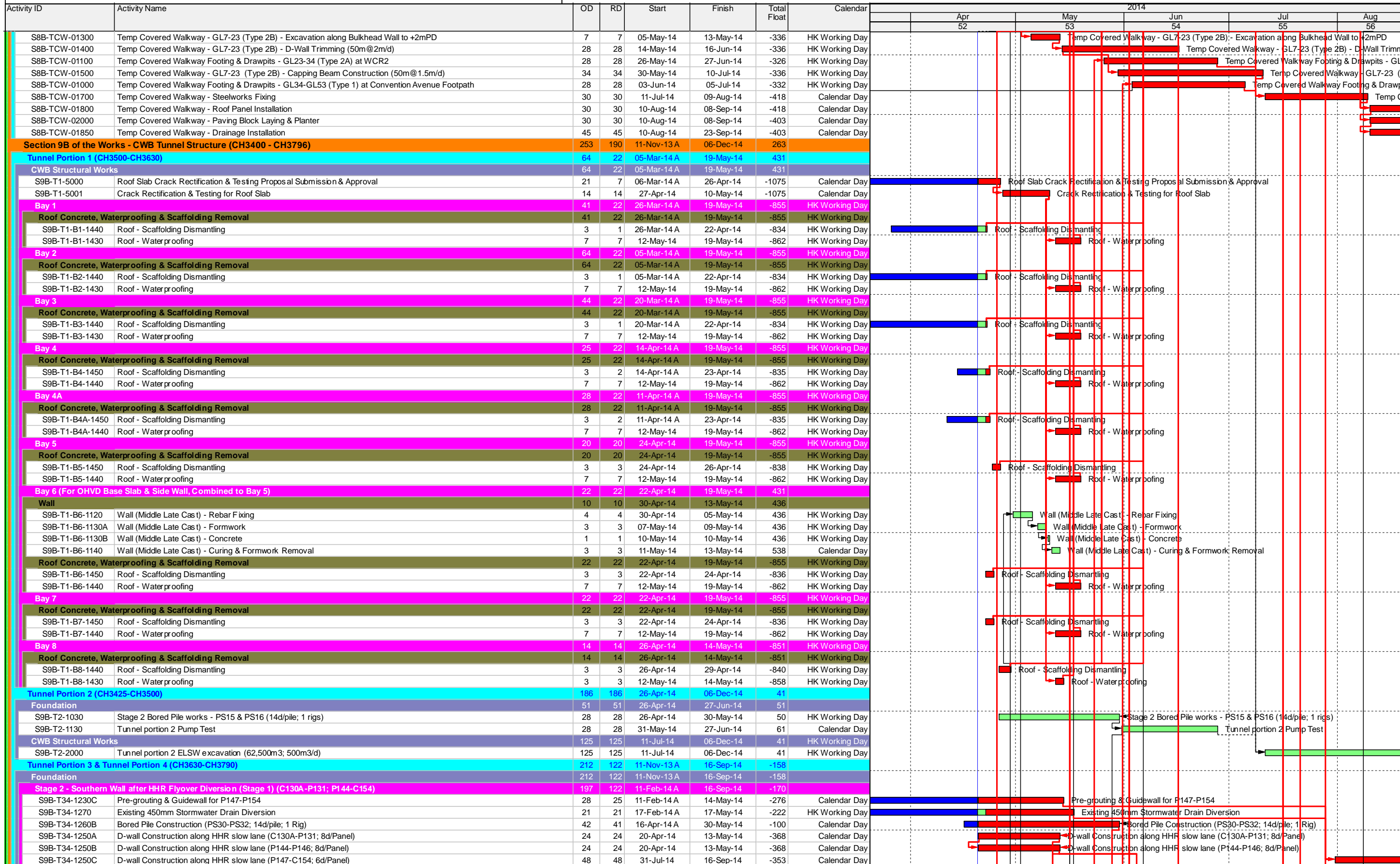
CHUN WO - CRGL JOINT VENTURE

- Remaining Work
- Actual Work
- Summary Bar
- Critical Remaining Work
- Milestone

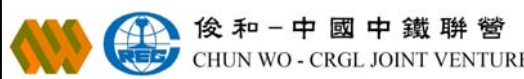
**CEDD CONTRACT NO. HK/2009/02**  
**Wan Chai Development Phase II - Central-Wan Chai Bypass at Wan Chai East (Contract 2)**  
**3-MONTH ROLLING PROGRAMME (dd 20-Apr-14)**

Date	Revision	Checked	Approved
20-Apr-14	3MRP		
20-Feb-14	Baseline Prog		





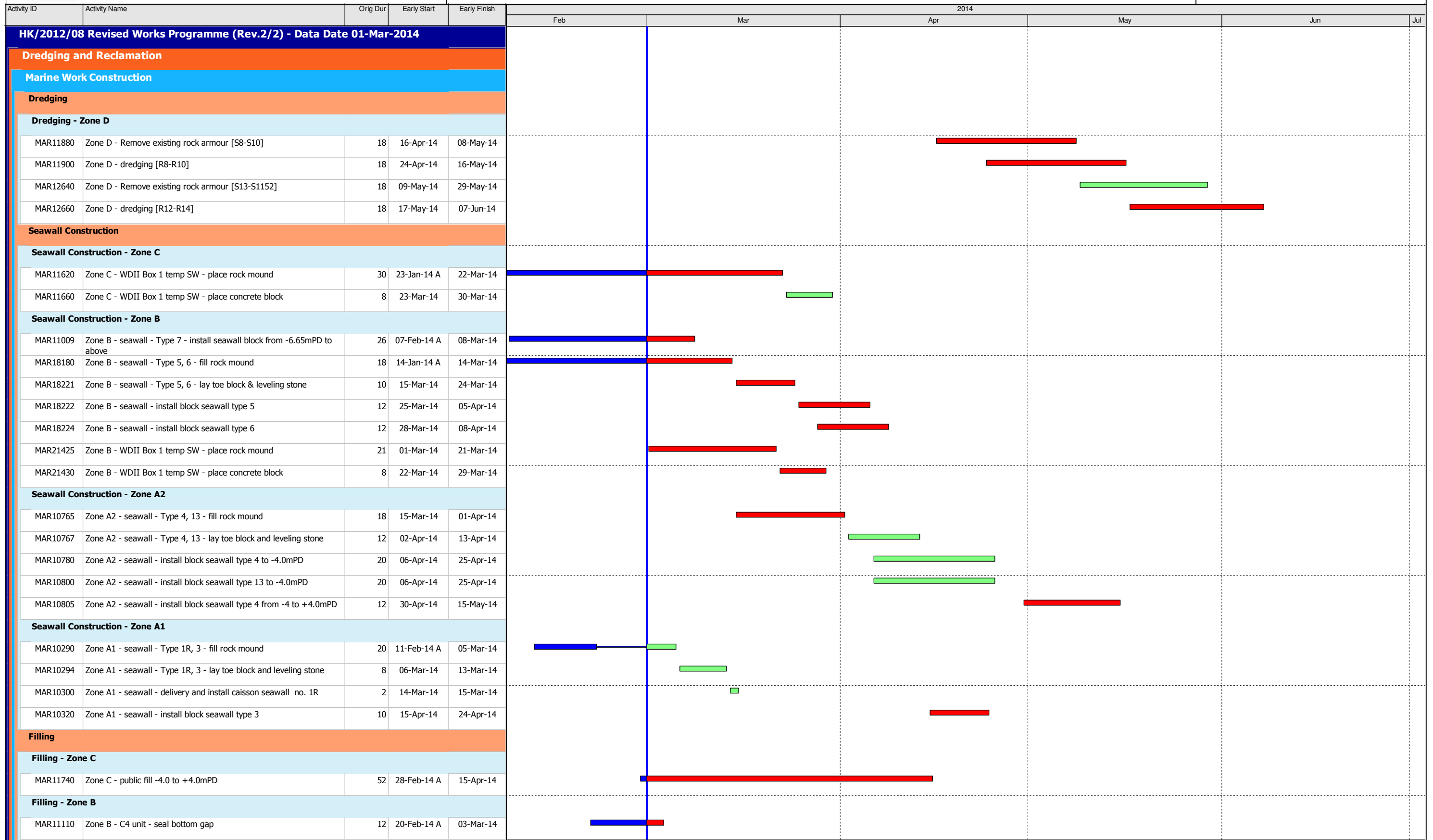
Activity ID	Activity Name	OD	RD	Start	Finish	Total Float	Calendar	2014					
								Apr 52	May 53	Jun 54	Jul 55	Aug 56	
<b>Stage 3 - Northern Wall after TWCR4 Reclamation (C88-C105)</b>													
S9B-T34-1410	Pre-drilling at TWCR4	186	102	11-Nov-13 A	30-Jul-14	-147	Calendar Day						
S9B-T34-1420C	Pre-grouting & Guide Wall Construction for P100-C105	21	14	19-Feb-14 A	03-May-14	-217	Calendar Day						
S9B-T34-1420B	Pre-grouting & Guide Wall Construction for C88-P96	28	28	28-Mar-14 A	17-May-14	-333	Calendar Day						
S9B-T34-1430A	D-wall Construction at TWCR4 (P97-P99; 8d/Panel)	24	24	14-May-14	06-Jun-14	-368	Calendar Day						
S9B-T34-1440F	Bored Pile Construction (PN27; 14d/pile)	14	14	31-May-14	13-Jun-14	-100	Calendar Day						
S9B-T34-1430B	D-wall Construction at TWCR4 (C88-P96; 6d/Panel)	54	54	07-Jun-14	30-Jul-14	-353	Calendar Day						
<b>Temp Works for HHR Flyover Diversion (Stage 2)</b>													
<b>Bridge 1</b>													
S9B-TTA-1000	Excavation & D-Wall Modification for Supporting Bridge 1	37	37	07-Jun-14	21-Jul-14	-294	Calendar Day						
S9B-TTA-1100	Overall Excavation to +1mPD	7	7	03-Jul-14	10-Jul-14	-295	HK Working Day						
S9B-TTA-1300	Installation of S1 Strut & Bracing	7	7	11-Jul-14	18-Jul-14	-295	HK Working Day						
S9B-TTA-1400	Installation of Bridge 1 spanning across CWB	3	3	19-Jul-14	21-Jul-14	-367	Calendar Day						
<b>Bridge 2</b>													
S9B-TTA-2000	D-Wall Modification for Supporting Bridge 2	14	14	14-May-14	29-May-14	-281	HK Working Day						
S9B-TTA-2100	Excavation & Installation of S1 Strut	12	12	30-May-14	13-Jun-14	-281	HK Working Day						
S9B-TTA-2200	Installation of Bridge 2 spanning across CWB	5	5	19-Jun-14	23-Jun-14	-356	Calendar Day						
<b>Bridge 3</b>													
S9B-TTA-3400	Steel Supporting Frame Erection for Bridge 3	30	30	28-Apr-14	04-Jun-14	-281	HK Working Day						
S9B-TTA-3500	Installation of Bridge 3 connecting with Existing HHR Flyover	14	14	05-Jun-14	18-Jun-14	-351	Calendar Day						
<b>At-Grade Roadworks</b>													
S9B-TTA-4150	Concrete Deck & Steel Deck on Existing Box Culvert O Bay 17 - Bay 19	35	35	22-Apr-14	04-Jun-14	-285	HK Working Day						
S9B-TTA-4100	At-Grade Temp Roadworks, Drainage & Furniture Installation in TWCR4 Area	45	45	07-Jun-14	30-Jul-14	-287	HK Working Day						
S9B-TTA-4200	Road Furniture Installation & Pavement Works on Bridge 3	30	30	19-Jun-14	24-Jul-14	-282	HK Working Day						
S9B-TTA-4000	Road Furniture Installation & Pavement Works on Bridge 2	30	30	24-Jun-14	29-Jul-14	-286	HK Working Day						
S9B-TTA-4300	Road Furniture Installation & Pavement Works on Bridge 1	15	15	22-Jul-14	07-Aug-14	-294	HK Working Day						
S9B-TTA-4400	Diversion of Traffic to Steel Bridges & TWCR4 (Stage 2 TTA)	0	0		07-Aug-14	-366	Calendar Day						
S9B-TTA-4500	Demolish of Approach Ramp of Existing HHR Flyover for D-Wall Construction	24	24	08-Aug-14	04-Sep-14	-294	HK Working Day						
S9B-TTA-4600	Utility Diversion for D-Wall near Existing HHR Flyover Approach Ramp	35	35	08-Aug-14	11-Sep-14	-347	Calendar Day						
<b>Section 11 of the Works - Remainder of Works</b>													
<b>Marine Works at WCR2</b>													
S11-R2-1600	Removal of Existing SHK Pump House M&E equipment	66	35	09-Apr-14 A	24-May-14	-405	Calendar Day						
S11-R2-1800B	Complete remaining reclamation at WCR2 (Stage 2) - Remaining at WCR2	7	5	09-Apr-14 A	24-May-14	-405	Calendar Day						
<b>Marine Works at WCR3</b>													
S11-R3-1100	Mobilisation of Dredger of 1st Stage Dredging	113	113	20-Apr-14	04-Sep-14	-237	Calendar Day						
S11-R3-1200	Advanced Dredging at Permanent Seawall Area by Night Work (20,200m3 @ 250m3/d)	2	2	20-Apr-14	21-Apr-14	-300	Calendar Day						
S11-R3-1300	Advanced Rockfilling for Seawall by Night Work (24,000m3 @ 500m3/d)	80	80	22-Apr-14	10-Jul-14	-300	Calendar Day						
<b>Demolition Works</b>													
S11-DEMO-1200	Advanced Works - Cutting Electricity Supply to existing WSD SWPS to HEC	48	48	11-Jul-14	04-Sep-14	-237	HK Working Day						
<b>Soft Landscaping &amp; Establishment Works</b>													
<b>Section 8C of the Works - Landscape Softworks in Area 8</b>													
S8C-0010	Carry out landscape soft work on new ferry pier	42	42	20-Apr-14	31-May-14	-412	Calendar Day						
<b>Section 8D of the Works - Establishment Works in Area 8</b>													
S8D-0010	Carry out establishment work on new ferry pier	2375	861	24-Feb-10 A	27-Aug-16	0	Calendar Day						
<b>Section 12 of the Works - Protection and Preservation of Existing Trees</b>													
S12-0010	Protection and preservation of existing trees	90	90	20-Apr-14	18-Jul-14	-158	Calendar Day						
<b>SUMMARY PROGRAMME</b>													
<b>CWB Tunnel Construction &amp; Remaining Works (Section 9A, 9B, 10 &amp; 11)</b>													
<b>CWB Tunnel Works in WCR1</b>													
SUM-CWB-14000	Backfilling for Tunnel Portion 1	1071	437	25-Jul-12 A	30-Jun-15	-154	Calendar Day						
<b>CWB Tunnel Works in WCR2</b>													
SUM-CWB-20000	Reclamation at WCR2	97	97	20-May-14	24-Aug-14	-869	Calendar Day						
SUM-CWB-21000	Foundation for Tunnel Portion 2	865	231	25-Jul-12 A	06-Dec-14	52	Calendar Day						
SUM-CWB-22000	Pump Test & Excavation for Tunnel Portion 2	224	35	25-Jul-12 A	24-May-14	-405	Calendar Day						
<b>CWB Tunnel Works in WCR3</b>													
SUM-CWB-30000	Reclamation at WCR3 & Ferry Pier Demolition (Except Water Channel Maintained for HK/2009/01)	366	41	27-Dec-12 A	30-May-14	61	Calendar Day						
<b>CWB Tunnel Works in WCR4/TWCR4</b>													
SUM-CWB-41000B	Foundation for Tunnel Portion 3&4 (except Eastern Bulkhead Wall)	190	190	31-May-14	06-Dec-14	52	Calendar Day						
<b>Reprovisioning of Existing Facilities (Section 3, 4A, 4B, 4C, 5, 6, 7, 8A &amp; 8B)</b>													
<b>Reprovisioning of Box Culvert N (Section 7)</b>													
SUM-FAC-52000	VO116 - New Transformer Building to Ferry Pier	435	435	22-Apr-14	30-Jun-15	-413	Calendar Day						
<b>Reprovisioning of Wan Chai Ferry Pier &amp; Covered Walkway (Section 8A &amp; 8B)</b>													
SUM-FAC-62000	Ferry Pier ABWF Works	457	321	11-Nov-13 A	06-Mar-15	-330	Calendar Day						
SUM-FAC-65000	ABWF Works on Observation Deck under Section 8B	249	249	11-Aug-14	16-Apr-15	-1074	Calendar Day						
SUM-FAC-66000	Temp Covered Walkway	463	179	17-Dec-12 A	15-Oct-14	-188	Calendar Day						


**俊和 - 中國中鐵聯營**  
**CHUN WO - CRGL JOINT VENTURE**

█ Remaining Work     █ Summary Bar  
█ Actual Work     █ Critical Remaining Work  
◆ Milestone

**CEDD CONTRACT NO. HK/2009/02**  
**Wan Chai Development Phase II - Central-Wan Chai Bypass at Wan Chai East (Contract 2)**  
**3-MONTH ROLLING PROGRAMME (dd 20-Apr-14)**

Date	Revision	Checked	Approved
20-Apr-14	3MRP		
20-Feb-14	Baseline Prog		



Data Date: 01-Mar-14

- ◆ Current Milestone
- Actual Work
- Critical Remaining Work
- Remaining Work
- Remaining Level of Effort

**3-Month Rolling Programme for Works outside CRIII Area**  
(Mar 2014 to May 2014)

Date	Revision	Checked	Approved
01-Mar-14	Rev. 2		







Activity ID	Activity Name	Orig Dur	Early Start	Early Finish	2014						
					Feb	Mar	Apr	May	Jun	Jul	
<b>MVB Substructure - Diaphragm Wall and Sheetpile Wall</b>											
SII10425	Sec II - MVB - Set up predrill rigs and preparation for predrilling	6	03-Mar-14	08-Mar-14		■					
SII10430	Sec II - MVB - D-wall construction preparation and silo setup	44	08-Mar-14	20-Apr-14		■	■				
SII10440	Sec II - MVB - predrilling and ground pretreatment for Dwall	102	05-Mar-14	10-Jul-14		■	■	■	■	■	
SII10460	Sec II - MVB A - construct guide wall [P1-P13, P33-P41]	150	21-Mar-14	22-Sep-14			■	■	■	■	
SII10480	Sec II - MVB A - construct Dwall [P1-P13, P33-P41] (1.5m thk on rock)	150	21-Apr-14	20-Oct-14				■	■	■	
SII10520	Sec II - MVB B - construct guide wall [P14-P32]	66	18-Mar-14	10-Jun-14		■	■	■	■	■	
SII10540	Sec II - MVB B - construct Dwall [P14-P32] (1.5m thk on rock)	150	21-Apr-14	20-Oct-14				■	■	■	
<b>Section II A - CWB Tunnel &amp; Slip Road Structures and Facilities</b>											
<b>Section II A - CWB Tunnel - Design, Submission and Approval</b>											
SIIA10460	CWB Tunnel - MS for DWall Construction - Eng comment & approve	28	16-Jan-14 A	06-Mar-14	■	■					
<b>CWB A2 &amp; B</b>											
<b>CWB A2 &amp; B - Dwall Construction</b>											
SIIA11460	Sec II A - CWB B: Predrilling for Dwall & piles	78	29-Mar-14	07-Jul-14				■	■	■	
SIIA11480	Sec II A - CWB B: Ground treatment	120	17-Apr-14	08-Sep-14				■	■	■	
SIIA11500	Sec II A - CWB B: construct Guide Wall	60	22-Apr-14	04-Jul-14				■	■	■	
SIIA11520	Sec II A - CWB B: construct DWall and barrette (1.2m thk on rock)	96	17-May-14	08-Sep-14				■	■	■	
SIIA13340	Sec II A - CWB A2(1): Predrilling for Dwall & piles	50	16-May-14	15-Jul-14				■	■	■	
SIIA13360	Sec II A - CWB A2(1): ground pretreatment	46	16-May-14	10-Jul-14				■	■	■	
SIIA13380	Sec II A - CWB A2(1): Guide Wall	50	16-May-14	15-Jul-14				■	■	■	
<b>Section VI B - Area 8</b>											
<b>Area 8 - Demolish Ex. Cooling Water Pumping Station</b>											
SVIB10000	MS of cooling water pump station demolition Works - prepare and submit	60	03-Dec-13 A	26-Mar-14	■	■					
SVIB10020	MS of cooling water pump station demolition - ICE check and issue check cert	14	27-Mar-14	16-Apr-14			■	■			
SVIB10040	MS of cooling water pump station demolition Works - Eng comment and approve	28	27-Mar-14	23-Apr-14			■	■			
SVIB10070	Sec VI B - site clearance, u/g utilities detection	12	16-Apr-14	29-Apr-14				■	■		
SVIB10080	Sec VI B - demolish existing air duct	30	30-Apr-14	06-Jun-14					■	■	
<b>Section VI C - Area 3, 6, 8A &amp; 8C</b>											
<b>Area 8A &amp; 8C - Seawall Modification (Reviewed)</b>											
<b>Design Submission &amp; Approval</b>											
PRS-1000	Sec VI C - Temp Work Design for Seawall Modification - Prepare and submit to ICE	90	20-Nov-13 A	15-Mar-14	■	■					
PRS-1002	Sec VI C - Temp Work Design for Seawall Modification & MTR Pump Room Stabilization - ICE check and issue check cert.	14	17-Mar-14	01-Apr-14			■	■			
PRS-1004	Sec VI C - Temp Work Design for Seawall Modification & MTR Pump Room Stabilization - Engineer / MTR comment and approve	28	17-Mar-14	22-Apr-14			■	■			
<b>Tenders for Sub-contractor and Procurement</b>											
Sub11040	Sec VI C - Prepare Sub-contract for Seawall Modification and Procurement of Materials	90	23-Apr-14	09-Aug-14				■	■	■	
<b>Section VI D - Area 8B &amp; 10</b>											
<b>WDII Box 1 Construction (Reviewed)</b>											
<b>WDII Box 1 Submission and Approval / Material Procurement</b>											
S0721020	Sec VI D - WD II Box 1 - temp work design - prepare and submit	180	03-Jul-13 A	23-Apr-14	■	■	■	■	■	■	
S0721040	Sec VI D - WD II Box 1 - temp work design - ICE check and issue check cert	28	24-Apr-14	21-May-14				■	■		
S0721060	Sec VI D - WD II Box 1 - temp work design - Engineer comment and approve	28	22-May-14	18-Jun-14					■	■	





Activity ID	Activity Name	Orig Dur	Early Start	Early Finish	2014						
					Feb	Mar	Apr	May	Jun	Jul	
<b>Section VIII - Landscape Softworks</b>											
<b>Soft Landscaping Works</b>											
SVIII10020	Sec VIII - Tree Felling/Transplanting at Portion 2 & 2A	90	20-Nov-13 A	12-Jun-14							
<b>Section X - Protection &amp; Preservation of Trees</b>											
<b>Soft Landscaping Works</b>											
SX10020	Sec X - Protection & Preservation of Trees	1632	31-Jan-13 A	20-Jul-17							



Activity Name	Duration (cal days)	Start	Finish	Total Float	2011				2012				2013				2014				2015				2016					
					Q1	Q2	Q3	Q4	Q1	Q2	Q3	Q4	Q1	Q2	Q3	Q4	Q1	Q2	Q3	Q4	Q1	Q2	Q3	Q4	Q1	Q2	Q3	Q4		
<b>HY/2009/15 - Works Programme Rev. K (DD:20-Feb-14) 1st Submission</b>																														
<b>Works in East Ventilation Adit - Based on Alternative Method</b>																														
EAST VENTILATION ADIT - SUMMARY	774d	08-May-12 A	20-Jun-14	14d																					EAST VENTILATION ADIT - SUMMARY					
<b>Works in TS1 Area (Portion 13A, 13B) &amp; CCT at Portion 1,2,4,6,22</b>																														
<b>TS1 - Temporary Reclamation</b>																														
TS1 - TEMPORARY RECLAMATION SUMMARY	127d	07-Jan-11 A	13-May-11 A																						TS1 - TEMPORARY RECLAMATION SUMMARY					
<b>TS1 - Diaphragm Wall</b>																														
TS1 DIAPHRAGM WALL & PUMP TEST SUMMARY	235d	19-May-11 A	30-Dec-11 A																						TS1 DIAPHRAGM WALL & PUMP TEST SUMMARY					
<b>TS1 - ELS Works</b>																														
TS1 ELS SUMMARY	193d	05-Jan-12 A	16-Apr-12 A																						TS1 ELS SUMMARY					
<b>TS1-CCT RC Structure</b>																														
TS1 CCT - SUMMARY	100d	12-Jan-12 A	19-Jun-12 A																						TS1 CCT SUMMARY					
<b>EV Adit at Portion 1,2,6, 22</b>																														
EVA AT PORTION 1 & 2	27d	13-Jun-12 A	17-Jul-12 A																						EVA AT PORTION 1 & 2					
<b>TS1 - Removal of Temp. Reclamation</b>																														
TS1 - REMOVAL OF TEMP. RECLAMATION SUMMARY	133d	04-Jun-12 A	15-Oct-12 A																						TS1 - REMOVAL OF TEMP. RECLAMATION SUMMARY					
<b>Removal of Temp. Reclamation</b>																														
DURATION OF TEMP. RECLAMATION TS1W (MAX=391D)	604d	25-Jan-11 A	20-Sep-12 A																						DURATION OF TEMP. RECLAMATION TS1W (MAX=391D)					
DURATION OF TEMP. RECLAMATION TS1E (EXCLUDING TS1W) (MAX=90D)	557d	13-Mar-11 A	20-Sep-12 A																						DURATION OF TEMP. RECLAMATION TS1E (EXCLUDING TS1W) (MAX=90D)					
<b>Works in TS2 Area (Portion 13A, 13B)</b>																														
<b>TS2 - Temporary Reclamation</b>																														
TS2 - TEMPORARY RECLAMATION SUMMARY	430d	16-Apr-12 A	20-Jun-13 A																						TS2 - TEMPORARY RECLAMATION SUMMARY					
<b>TS2 - Diaphragm Wall</b>																														
TS2 - DIAPHRAGM WALL SUMMARY	281d	21-Nov-12 A	28-Aug-13 A																						TS2 - DIAPHRAGM WALL SUMMARY					
<b>TS2 - ELS Works</b>																														
TS2 ELS SUMMARY	87d	17-Sep-13 A	13-Dec-13 A																						TS2 ELS SUMMARY					
<b>TS2 - CCT RC Structure</b>																														
TS2 - CCT SUMMARY	123d	23-Nov-13 A	25-Mar-14	-59d																					TS2 - CCT SUMMARY					
<b>TS2 - Removal of Temp. Reclamation</b>																														
TS2 - REMOVAL OF TEMP. RECLAMATION SUMMARY	82d	11-Mar-14	31-May-14	-129d																					TS2 - REMOVAL OF TEMP. RECLAMATION SUMMARY					
<b>Removal of Temp. Reclamation</b>																														
DURATION OF TEMP. RECLAMATION TS2 (MAX= 596D)	1233d	15-Jan-11 A	31-May-14	-122d																					DURATION OF TEMP. RECLAMATION TS2 (MAX= 596D)					
DURATION OF TEMP. RECLAMATION TZ1 (MAX= 990D)	1223d	25-Jan-11 A	31-May-14	-122d																					DURATION OF TEMP. RECLAMATION TZ1 (MAX= 990D)					
<b>Works in TS1/TS2 - Cable Trough/Maintenance Walkway</b>																														
TS2 CABLE TROUGH SUMMARY	218d	06-Jan-14 A	11-Aug-14	-38d																					TS2 CABLE TROUGH SUMMARY					
<b>Works in TS4/ME4 Area (Portion 14A, 14B, 15, 23)</b>																														
<b>TS4 + ME4 (TS4+ &amp; TZ6) Temporary Reclamation</b>																														
TS4 - TEMPORARY RECLAMATION SUMMARY	364d	20-Jan-11 A	16-Apr-12 A																						TS4 - TEMPORARY RECLAMATION SUMMARY					
<b>TS4/ME4 - Diaphragm Wall</b>																														
DIAPHRAGM WALL SUMMARY	310d	23-Dec-11 A	27-Oct-12 A																						DIAPHRAGM WALL SUMMARY					
<b>TS4/ME4 - ELS Works &amp; Rock Excavation</b>																														
TS4 - ELS + ROCK EXCAVATION SUMMARY	378d	10-Oct-12 A	22-Oct-13 A																						TS4 - ELS + ROCK EXCAVATION SUMMARY					
<b>TS4/ME4 - Mined Tunnel East Portal Works</b>																														
MT EAST PORTAL WORKS SUMMARY	201d	16-Aug-13 A	13-Mar-14	-205d																					MT EAST PORTAL WORKS SUMMARY					
<b>TS4/ME4 - CCT RC Structure</b>																														
TS4/ME4 - CWB CCT SUMMARY	310d	20-May-13 A	05-Apr-14	-205d																					TS4/ME4 - CWB CCT SUMMARY					
TS4/ME4 - SCL CCT SUMMARY	125d	20-Dec-13 A	04-May-14	-205d																					TS4/ME4 - SCL CCT SUMMARY					
<b>TS4/ME4 - Removal of Temporary Reclamation</b>																														
DURATION OF TEMP. RECLAMATION TS4 (MAX=1029D)	1159d	28-Apr-11 A	29-Jun-14	-218d																					DURATION OF TEMP. RECLAMATION TS4 (MAX=1029D)					
REMOVAL OF TEMP. RECLAMATION SUMMARY	64d	28-Apr-14	30-Jun-14	-218d																					REMOVAL OF TEMP. RECLAMATION SUMMARY					
<b>Re-provision of Permanent Jetty/ Floating Pontoon</b>																														
RE-PROVISION OF PERMANENT JETTY	150d	20-Feb-14	22-Aug-14	414d																					RE-PROVISION OF PERMANENT JETTY					
<b>CHT Protection Works at Location A,B,C</b>																														
<b>ADMS Installation</b>																														
ADMS INSTALLATION - SUMMARY	74d	01-Feb-11 A	15-Apr-11 A																						ADMS INSTALLATION - SUMMARY					
<b>Standby Dewatering System(CSD: Grout Curtain Cut-off Wall Scheme)</b>																														
STANDBY DEWATERING SYSTEM - SUMMARY	452d	19-Apr-11 A	13-Jul-12 A																						STANDBY DEWATERING SYSTEM - SUMMARY					
<b>VO.NO. 9 - Steel Weights &amp; Aluminum Cladding Inside CHT</b>																														
VO NO. 8 & 14 - STEEL WEIGHTS & CLADDING SUMMARY	378d	20-Aug-11 A	31-Aug-12 A																						VO.NO. 9 - STEEL WEIGHTS & ALUMINUM CLADDING INSIDE CHT					
<b>Works in TPCWAE Area (Portion 20A, 20B)</b>																														
<b>TPCWAE - Temporary Reclamation</b>																														
TPCWAE - TEMPORARY RECLAMATION SUMMARY	143d	08-Dec-10 A	07-Jun-11 A																						TPCWAE - TEMPORARY RECLAMATION SUMMARY					
<b>TPCWAE - Diaphragm Wall</b>																														
DIAPHRAGM WALL & PUMP TEST SUMMARY	232d	13-Jun-11 A	30-Jan-12 A																						DIAPHRAGM WALL & PUMP TEST SUMMARY					
<b>TPCWAE-ELS Works &amp; Soft Excavation</b>																														
TPCWAE - ELS SUMMARY (EXCEPT ROCK EXCAVATION)	240d	17-Jan-12 A	12-Sep-12 A																						TPCWAE-ELS SUMMARY (EXCEPT ROCK EXCAVATION)					
<b>TPCWAE - Rock Excavation</b>																														
TPCWAE - ROCK EXCAVATION SUMMARY	276d	19-Jun-12 A	05-Apr-13 A																						TPCWAE - ROCK EXCAVATION SUMMARY					
<b>MT West Portal Works</b>																														
MT WEST PORTAL WORKS SUMMARY	375d	08-Nov-12 A	04-Dec-13 A																						MT WEST PORTAL WORKS SUMMARY					
<b>CCT RC Structure</b>																														
CCT - AREA A	359d	24-Jan-13 A	18-Mar-14	-127d																					CCT - AREA A					
CCT - AREA B, STITCHING AREA	111d	27-Nov-13 A	23-Mar-14	-127d																					CCT - AREA B, STITCHING AREA					
<b>Removal of Temporary Reclamation</b>																														
REMOVAL OF RECLAMATION SUMMARY	43d	15-Mar-14	30-Apr-14	-143d																					REMOVAL OF RECLAMATION SUMMARY					
<b>Works in TPCWAW Area</b>																														
<b>TPCWAW - Temporary Reclamation</b>																														
TPCWAW - TEMPORARY RECLAMATION SUMMARY	86d	02-May-14	26-Jul-14	0d																					TPCWAW - TEMPORARY RECLAMATION SUMMARY					
<b>TPCWAW - Diaphragm Wall</b>																														
Diaphragm Wall & Pump Test Summary	193d	27-Jul-14	04-Feb-15	0d																					DIAPHRAGM WALL & PUMP TEST SUMMARY					
<b>TPCWAW- ELS Works</b>																														
TPCWAW - ELS SUMMARY (EXCEPT ROCK EXCAVATION)	88d	06-Feb-15	04-May-15	0d																					TPCWAW - ELS SUMMARY (EXCEPT ROCK EXCAVATION)					
<b>TPCWAW - ROCK EXCAVATION</b>																														
TPCWAW - ROCK EXCAVATION SUMMARY	104d	29-Apr-15	10-Aug-15	1d																					TPCWAW - ROCK EXCAVATION SUMMARY					
<b>TPCWAW - CCT RC Structure</b>																														
TPCWAW - CCT SUMMARY	94d	24-Jul-15	25-Oct-15	0d																					TPCWAW - CCT SUMMARY					
<b>TPCWAW - Removal of Temporary Reclamation</b>																														
DURATION OF TEMP. RECLAMATION TZ2 (MAX=1666D)	1812d	11-Feb-11 A	27-Jan-16	0d																					DURATION OF TEMP. RECLAMATION TZ2 (MAX=1666D)					
DURATION OF TEMP. RECLAMATION TPCWAW (MAX=816D)	628d	09-May-14	27-Jan-16	0d																					DURATION OF TEMP. RECLAMATION TPCWAW (MAX=816D)					
REMOVAL OF TEMP. RECLAMATION SUMMARY	59d	18-Oct-15	27-Jan-16	0d																					REMOVAL OF TEMP. RECLAMATION SUMMARY					
<b>Works for Mined Tunnel (Portion 16, 17, 18)</b>																														
<b>(SR8) Slip Road 9 Tunnel, Total L = 167m, less 13m at WP and less 5m at EP= 149m Tunnel Excav</b>																														
SR8 - MINED TUNNEL WORKS SUMMARY	515d	19-Oct-13 A	17-Mar-15	230d																					SR8 - MINED TUNNEL WORKS SUMMARY					
<b>(EB) East Bound Tunnel, L = 167m, less 7m at WP and less 1.5m at EP= 158.5m Tunnel Excav</b>																														
EB - MINED TUNNEL WORKS SUMMARY	745d	19-Oct-13 A	02-Nov-15	0d																					EB - MINED TUNNEL WORKS SUMMARY					
<b>(WB) West Bound Tunnel, L = 153m, less 7m at WP and less 1.5m at EP= 144.5m Tunnel Excav</b>																														
WB - MINED TUNNEL WORKS SUMMARY	745d	19-Oct-13 A	02-Nov-15	0d																					WB - MINED TUNNEL WORKS SUMMARY					

Actual Level of Effort  
 Remaining Level of Effort  
 Milestone

**China State Construction Engineering (HK) Ltd :**  
  
**HY/2009/15 - CWB Tunnel(CBTS)**  
  
**EXECUTIVE SUMMARY PROGRAMME**

Prepared by William Caluza			
Date	Revision	Checked	Approved
20-Feb-14	Executive Summary Progra...	GC	KC



Activity ID	Activity Name	Original Duration	Start	Finish	Total Float	2014					
						Apr	May	Jun	Jul		
<b>Update 2013-10-20 CWB - Central Interchange (2014-04-20) Revised DWP R5a</b>											
<b>PRELIMINARIES</b>											
<b>Design</b>											
Temporary Works Design											
ELS - Trough A											
1174	ELS - ELS Trough A Prepare Design	52	02-May-14	22-Jun-14	21						
1176	ELS - ELS Trough A Prepare Method Statement	15	23-Jun-14	07-Jul-14	21						
1177	ELS - ELS Trough A ICE Check & Endorse	15	08-Jul-14	22-Jul-14	21						
<b>Procurement, Shop Drawing, Manufacture &amp; Delivery</b>											
Excavation & Lateral Support											
1172	ELS - Wailing & Shoring Material Sourcing, Procurement and Delivery (Retaining Wall)	30	20-Apr-14	19-May-14	289						
<b>Interfacing</b>											
Interfacing with CWB Route Wide & TCSS Contract											
1765	CWB Route Wide - Prepare & Submit Interfacing Management Plan with CWB Route Wide	28	20-Mar-14 A	24-Mar-14 A							
1773	CWB Route Wide - Review & Endorse Interfacing Management Plan	28	25-Mar-14 A	25-Apr-14	98						
1775	CWB Route Wide - Engineer Review & Approve Interfacing Management Plan	28	26-Apr-14	23-May-14	98						
Interfacing with Harbour-front Enhancement Project											
3550	HFE - Prepare & Submit Interfacing Management Plan with HFE	28	20-Jun-14	17-Jul-14	53						
3560	HFE - Review & Endorse Interfacing Management Plan	28	18-Jul-14	14-Aug-14	53						
<b>SECTION 3A - ALL TUNNEL WORKS IN PORTION IIIB</b>											
<b>CWB Tunnel - CH1704 to CH1825</b>											
CWB Tunnel Internal Works											
1751	1704-1825 - Construct Roadside Barriers & Roadside Services Duct	45	09-Dec-13 A	07-May-14	6						
<b>CWB Tunnel - CH1685 to CH1704</b>											
CWB Tunnel Structure											

- ◆ Current Milestone
- Critical Remaining Work
- Level of Effort
- Remaining Work
- ▲ Baseline Milestone
- Project Baseline
- Actual Work

**Leighton Contractors (Asia) Limited**  
**Programme Update 43 (April 2014)**  
**THREE MONTH ROLLING**

Project ID: U043  
 Baseline: DCP6-2  
 Layout: Update Three Month Rolling U043  
 Page 1 of 7

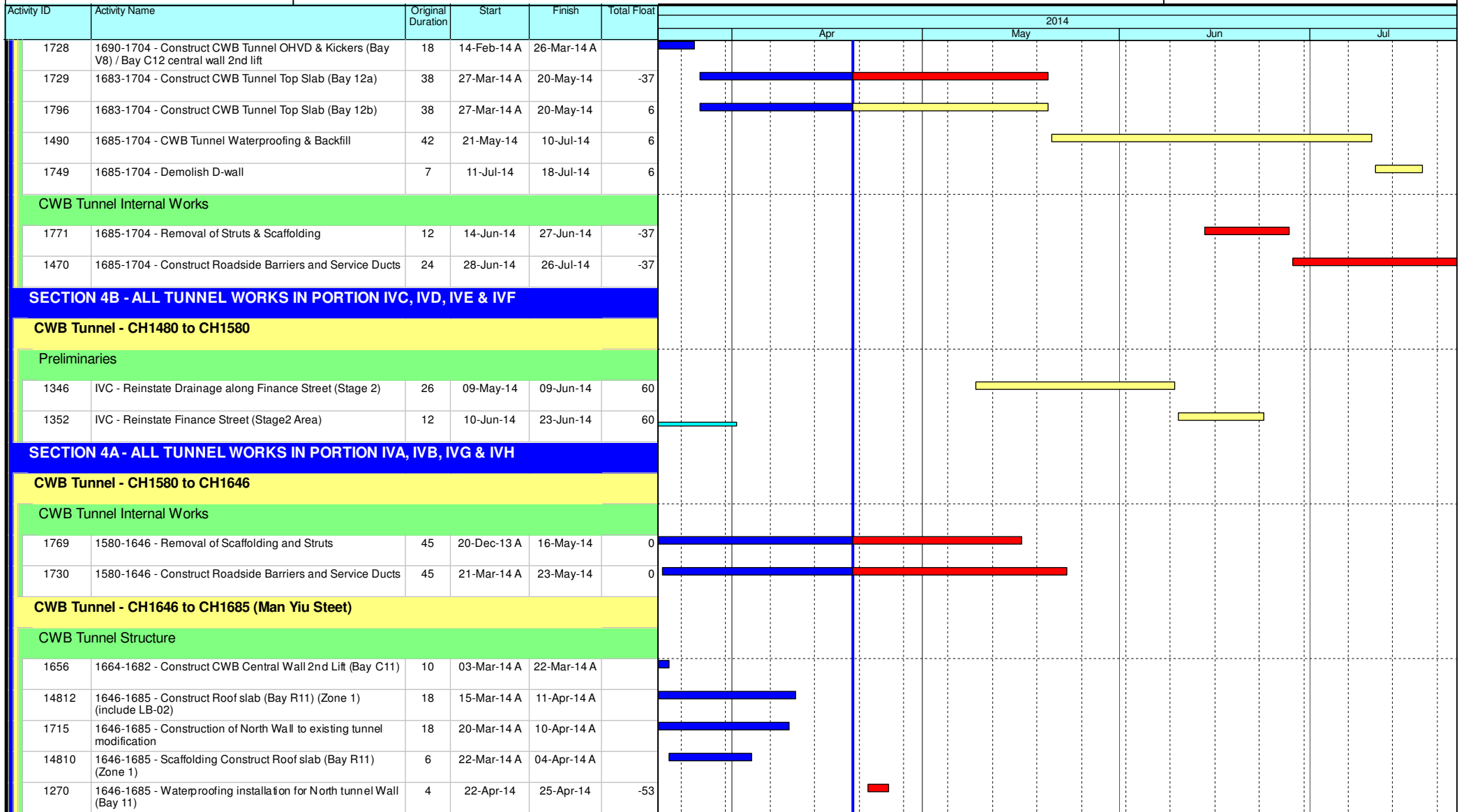
Date	Revision	Checked	Appro...
20-Apr-14	U043	AT	CW



Data Date: 20-Apr-14

# HY/2009/18 Central - Wan Chai Bypass (Central Interchange)

TASK filters: 3 Months\_1, Not HL.



- Current Milestone
- Critical Remaining Work
- Level of Effort
- Remaining Work
- Baseline Milestone
- Project Baseline
- Actual Work

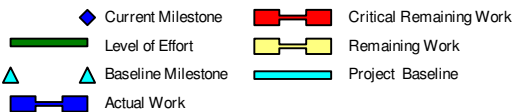
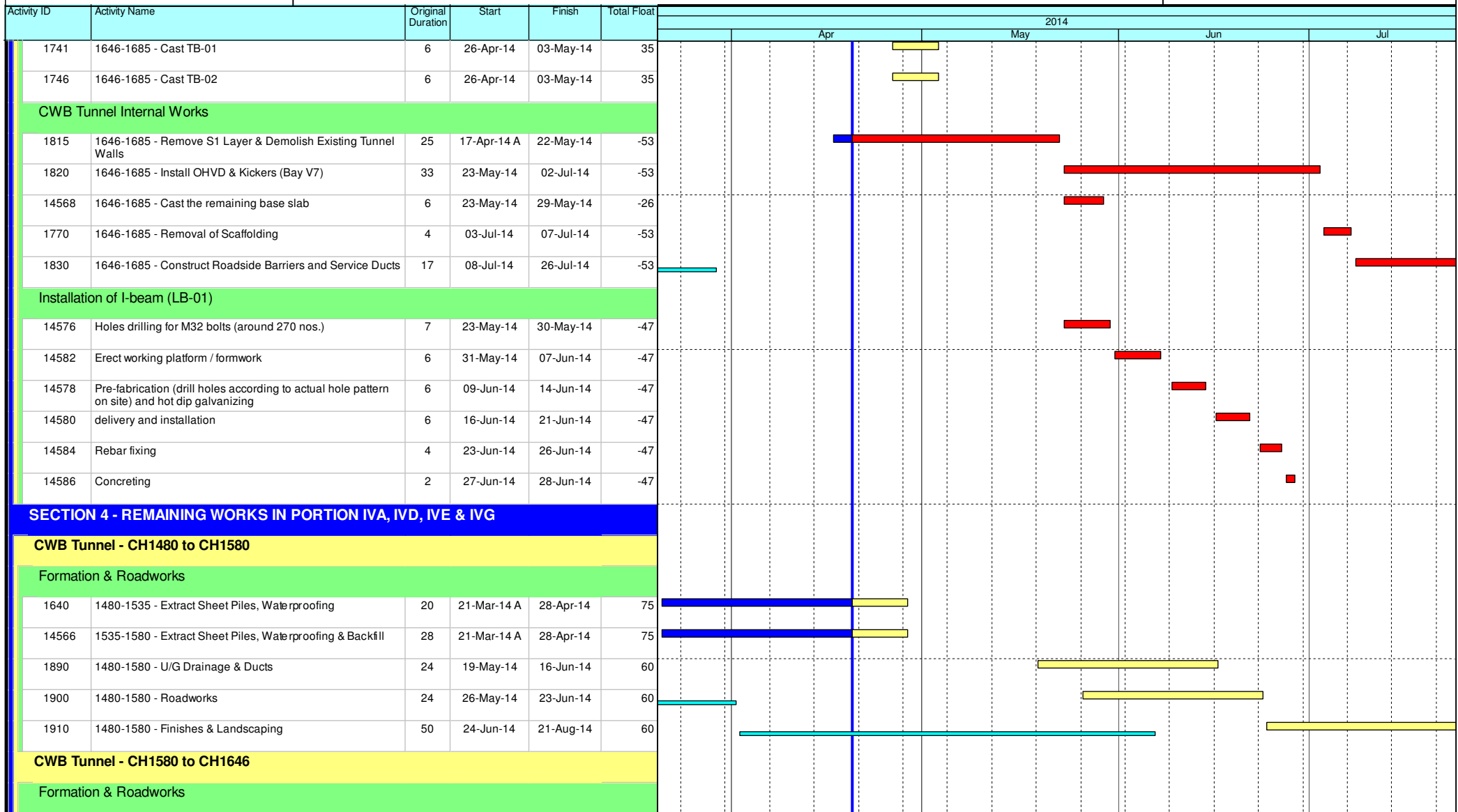
## Leighton Contractors (Asia) Limited Programme Update 43 (April 2014) THREE MONTH ROLLING

Project ID: U043  
 Baseline: DCP6-2  
 Layout: Update Three Month Rolling U043  
 Page 2 of 7

Date	Revision	Checked	Appro...
20-Apr-14	U043	AT	CW

# HY/2009/18 Central - Wan Chai Bypass (Central Interchange)

TASK filters: 3 Months\_1, Not HL.



## Leighton Contractors (Asia) Limited Programme Update 43 (April 2014) THREE MONTH ROLLING

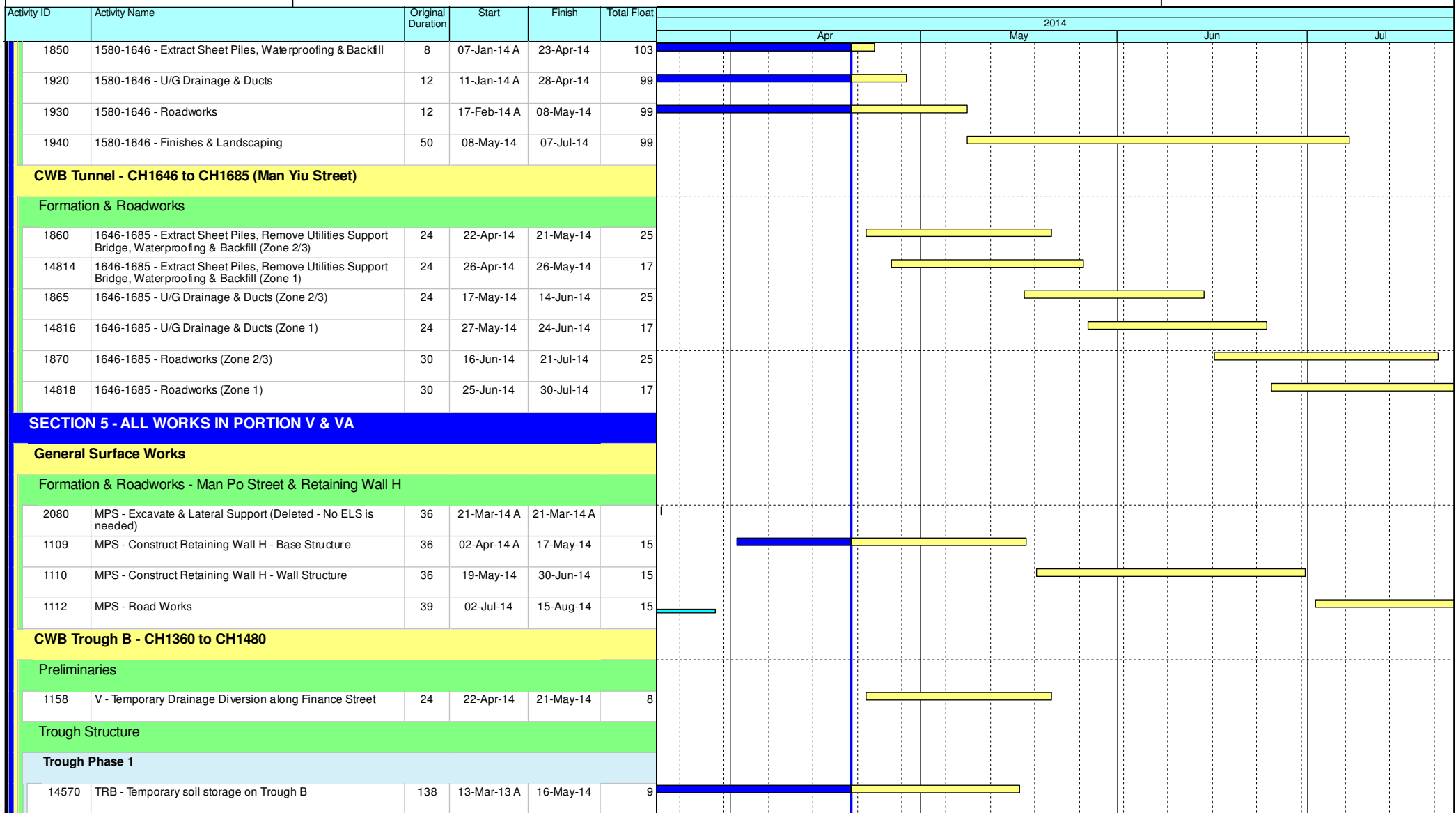
Project ID: U043  
 Baseline: DCP6-2  
 Layout: Update Three Month Rolling U043  
 Page 3 of 7

Date	Revision	Checked	Appro...
20-Apr-14	U043	AT	CW

Data Date: 20-Apr-14

# HY/2009/18 Central - Wan Chai Bypass (Central Interchange)

TASK filters: 3 Months\_1, Not HL.



- ◆ Current Milestone
- Critical Remaining Work
- ▬ Level of Effort
- ▬ Remaining Work
- ▲ Baseline Milestone
- ▬ Project Baseline
- ▬ Actual Work

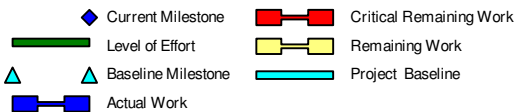
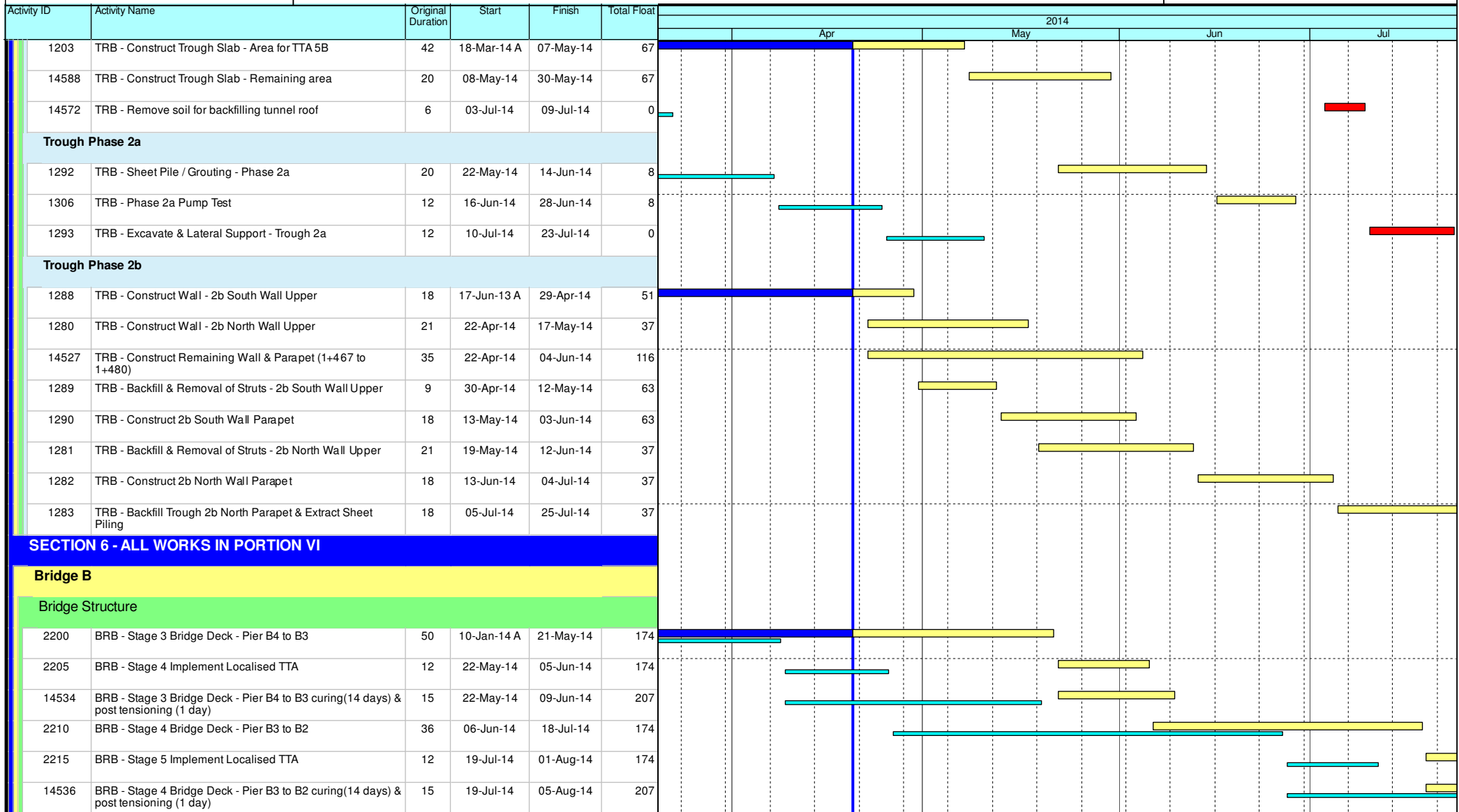
## Leighton Contractors (Asia) Limited Programme Update 43 (April 2014) THREE MONTH ROLLING

Project ID: U043  
 Baseline: DCP6-2  
 Layout: Update Three Month Rolling U043  
 Page 4 of 7

Date	Revision	Checked	Appro...
20-Apr-14	U043	AT	CW

# HY/2009/18 Central - Wan Chai Bypass (Central Interchange)

TASK filters: 3 Months\_1, Not HL.



## Leighton Contractors (Asia) Limited Programme Update 43 (April 2014) THREE MONTH ROLLING

Project ID: U043  
Baseline: DCP6-2  
Layout: Update Three Month Rolling U043  
Page 5 of 7

Date	Revision	Checked	Appro...
20-Apr-14	U043	AT	CW



Data Date: 20-Apr-14

# HY/2009/18 Central - Wan Chai Bypass (Central Interchange)

TASK filters: 3 Months\_1, Not HL.

Activity ID	Activity Name	Original Duration	Start	Finish	Total Float	2014			
						Apr	May	Jun	Jul
<b>General Surface Works</b>									
<b>Formation &amp; Roadworks - Man Kwong Street West Bound</b>									
2520	MKSVIWB - Roadworks (Ch 155-305)	335	14-Sep-12 A	16-Jun-14	320				
1783	MKSVIWB - Implement Localise TTA (Ch 100 - 200)	0	17-Jun-14		320				
1784	MKSVIWB - U/G Drainage (340 - 340A)	102	17-Jun-14	18-Oct-14	320				
<b>Bridge A</b>									
<b>Bridge Structure</b>									
2300	BRA - Pier A2 Columns & Crosshead	36	01-Nov-13 A	26-Apr-14	77				
1622	BRA - Backfill Pile Cap Abutment A	6	19-Mar-14 A	22-Mar-14 A					
2358	BRA - Abutment A	35	24-Mar-14 A	26-Apr-14	111				
1623	BRA - Curing & Erection of Scaffold Pier A3 to A2 Bridge Deck	25	28-Apr-14	28-May-14	77				
2310	BRA - Pier A3 to A2 Bridge Deck	35	29-May-14	10-Jul-14	77				
1624	BRA - Curing & Erection of Scaffold Pier A2 to Abutment A Bridge Deck	25	29-May-14	27-Jun-14	87				
2360	BRA - Pier A2 to Abutment A Bridge Deck	35	11-Jul-14	20-Aug-14	77				
<b>Elevated Layby at Rumsey Street Flyover East Bound</b>									
<b>Bridge Structure</b>									
2760	RSFLB - Pier E1/E2 Columns	70	04-Dec-13 A	16-May-14	400				
2770	RSFLB - Pier E1/E2 Bridge Deck	36	17-May-14	28-Jun-14	400				
2780	RSFLB - Construct Parapet	18	30-Jun-14	21-Jul-14	400				
<b>INTERFACING WORKS</b>									
<b>Interfacing with CWB(RW)</b>									
4200	INT - Section 4B - Joint Inspection & Handover to CWB(RW)	14	18-Mar-14 A	31-Mar-14 A					
<b>Key Dates for Completion of Sections</b>									
<b>Anticipated Completion</b>									
1054	KD4 - Anticipated Completion	0		10-Jul-14*	22				

- Current Milestone
- Critical Remaining Work
- Level of Effort
- Remaining Work
- Baseline Milestone
- Project Baseline
- Actual Work

## Leighton Contractors (Asia) Limited Programme Update 43 (April 2014) THREE MONTH ROLLING

Project ID: U043  
 Baseline: DCP6-2  
 Layout: Update Three Month Rolling U043  
 Page 6 of 7

Date	Revision	Checked	Appro...
20-Apr-14	U043	AT	CW

Activity ID	Activity Name	Original Duration	Start	Finish	Total Float	2014																	
						Apr			May			Jun			Jul								
<b>Contract Required Completion</b>																							
1045	KD7 - Section 4A Complete (DAY-1341)	0		23-May-14*	0																		
<b>Portion Handover Dates</b>																							
<b>Anticipated Handover</b>																							
2900	Portion IVC Handover (KD8 + 28 days)	0		31-Mar-14 A																			
2905	Portion IVF Handover (KD8 + 28 days)	0		31-Mar-14 A																			
<b>Contract Required Handover</b>																							
3005	Portion IVC Handover (KD8 + 28 days)	0		31-Mar-14 A																			
3015	Portion IVF Handover (KD8 + 28 days)	0		31-Mar-14 A																			
3025	Portion IVB Handover (KD7 + 28 days)	0		20-Jun-14*	0																		
3010	Portion IVH Handover (KD7 + 28 days)	0		20-Jun-14*	0																		

- Current Milestone
- Critical Remaining Work
- Level of Effort
- Remaining Work
- Baseline Milestone
- Project Baseline
- Actual Work

### Leighton Contractors (Asia) Limited Programme Update 43 (April 2014) THREE MONTH ROLLING

Project ID: U043  
 Baseline: DCP6-2  
 Layout: Update Three Month Rolling U043  
 Page 7 of 7

Date	Revision	Checked	Appro...
20-Apr-14	U043	AT	CW

Activity ID	Activity Name	Rem Dur	Start	Finish	2014																
					April					May					June				July		
					24	31	07	14	21	28	05	12	19	26	02	09	16	23	30	07	14
<b>3MRP - Apr 2014 to Jul 2014</b>																					
<b>01 - CONTRACT DATES</b>																					
<b>01.2 - Possession of Site</b>																					
0120-3000	Possession to Portion IVA	0	26-Feb-14 A																		
0120-3100	Possession to Portion IVB	0	26-Feb-14 A																		
0120-3200	Possession to Portion IIA	0	26-Feb-14 A																		
<b>02 - PRE-CONSTRUCTION WORKS</b>																					
<b>02.2 - Contractor's Submission</b>																					
0220-1560	Noise Enclosure/Barrier - Steel Material Submission	9	02-Jan-14 A	28-Apr-14																	
0220-1570	Noise Enclosure/Barrier - Steel Material Comment/Resubmission	15	12-Feb-14 A	13-May-14																	
0220-1580	Noise Enclosure/Barrier - Steel Material No Adverse Comment	12	14-May-14	25-May-14																	
<b>02.3 - Method Statement / Shop Drawings</b>																					
0230-1580	MS Bridge F1A/F2A Int. Noise Semi Enclosure - Submission	6	01-Apr-14 A	25-Apr-14																	
0230-1590	MS Bridge F1A/F2A Int. Noise Semi Enclosure - ER Review / Comment	15	26-Apr-14	10-May-14																	
0230-1600	MS Bridge F1A/F2A Int. Noise Semi Enclosure - Resubmission	12	11-May-14	22-May-14																	
0230-1610	MS Bridge F1A/F2A Int. Noise Semi Enclosure - No Adverse Comment	15	23-May-14	06-Jun-14																	
0230-1940	MS Beam Erection D1 to E2 - Submission	0	10-Feb-14 A	19-Apr-14 A																	
0230-1950	MS Beam Erection D1 to E2 - Comment/Resubmission	0	10-Apr-14 A	19-Apr-14 A																	
0230-1960	MS Beam Erection D1 to E2 - No Adverse Comment	6	15-Apr-14 A	25-Apr-14																	
0230-2050	MS Beam Erection F8 to F15 - Resubmission	9	19-Feb-14 A	28-Apr-14																	
0230-2060	MS Beam Erection F8 to F15 - No Adverse Comment	15	29-Apr-14	13-May-14																	
0230-1420	MS Permanent Noise Barrier Cantilever - Submission	18	10-Feb-14 A	07-May-14																	
0230-1430	MS Permanent Noise Barrier Cantilever - ER Review & Comment	15	08-May-14	22-May-14																	
0230-1440	MS Permanent Noise Barrier Cantilever - Resubmission	15	23-May-14	06-Jun-14																	
0230-1450	MS Permanent Noise Barrier Cantilever - No Adverse Comment	15	07-Jun-14	21-Jun-14																	
0230-1780	MS Temporary Bridge TD - Submission	0	02-Jan-14 A	19-Mar-14 A																	
0230-1790	MS Temporary Bridge TD - ER Review & Comment	6	20-Mar-14 A	25-Apr-14																	
0230-1800	MS Temporary Bridge TD - Resubmission	6	01-Apr-14 A	25-Apr-14																	
0230-1810	MS Temporary Bridge TD - No Adverse Comment	12	14-Apr-14 A	01-May-14																	
0230-1820	MS Bridge Demolition Pier E3 to P20 - Submission	24	01-Jun-14*	24-Jun-14																	
0230-1830	MS Bridge Demolition Pier E3 to P20 - ER Review & Comment	15	25-Jun-14	09-Jul-14																	
0230-1840	MS Bridge Demolition Pier E3 to P20 - Resubmission	15	10-Jul-14	24-Jul-14																	
<b>02.4 - Contractor's Design and Build Items</b>																					
0240-1041	Temp Bridge "TD" Design - Submission	0	01-Mar-13 A	19-Apr-14 A																	
0240-1042	Temp Bridge "TD" Design - ER review and comment	0	10-Apr-14 A	19-Apr-14 A																	
0240-1043	Temp Bridge "TD" Design - Resubmission	0	10-Apr-14 A	19-Apr-14 A																	
0240-1044	Temp Bridge "TD" Design - No Adverse Comment	9	15-Apr-14 A	28-Apr-14																	
0240-1045	Temp Bridge "TD" - Fabrication Pier F8 to F10	24	03-Feb-14 A	13-May-14																	
0240-1046	Temp Bridge "TD" - Fabrication Pier F5 to F8 and F10 to F15	36	20-Apr-14	25-May-14																	
0240-1110	Int. Noise Enclosure Structural Design - ER Review/Resubmission	14	17-Jan-14 A	03-May-14																	
0240-1111	Int. Noise Enclosure Structural Design - No Adverse Comment	28	04-May-14	31-May-14																	
0240-1113	Int. Noise Enclosure Structural - Shop Drawings Bridge F1A/F2A	24	02-Jan-14 A	13-May-14																	
0240-1115	Int. Noise Enclosure - Fabrication/Delivery Bridge F1A/F2A	60	14-Apr-14 A	18-Jun-14																	
0240-1114	Int. Noise Enclosure - Fabrication Yard Inspection	0	07-Apr-14 A	12-Apr-14 A																	

- Remaining Level of Effort
- Actual Level of Effort
- Actual Work
- Remaining Work
- Critical Remaining Work
- ◆ Milestone

**Contract HY/2009/19**

**Three Month Rolling Programme (20 Apr to 19 Jul 2014)**

3MRP

3MRP - Apr 2014 to Jul 2014

Page 1 of 10

Activity ID	Activity Name	Rem Dur	Start	Finish	2014																
					April					May					June					July	
					24	31	07	14	21	28	05	12	19	26	02	09	16	23	30	07	14
0240-1132	Noise Barrier Structural - Shop Drawings	48	21-Mar-14 A	06-Jun-14	Noise Barrier Structural - Shop Drawings																
0240-1133	Noise Barrier Structural - Fabrication/Delivery	90	01-Jun-14	29-Aug-14																	
0240-1134	Noise Barrier Panel - Submission	0	29-Jan-14 A	28-Feb-14 A																	
0240-1136	Noise Barrier Panel - Design ER Review/Resubmission	56	01-Mar-14 A	14-Jun-14	Noise Barrier Panel - Design ER Review/Resubm																
0240-1137	Noise Barrier Panel - Design No Adverse Comment	28	15-Jun-14	12-Jul-14	Noise Ba																
0240-1138	Noise Barrier Panel - Fabrication Delivery	60	13-Jul-14	10-Sep-14																	
0240-1050	Temp Bridge "TB" & "TC" Design - Prep & Submit	36	21-Feb-14 A	25-May-14	Temp Bridge "TB" & "TC" Design - Prep & Submit																
0240-1060	Temp Bridge "TB" & "TC" Design - ER review and comment	28	26-May-14	22-Jun-14	Temp Bridge "TB" & "TC" Design - ER																
0240-1070	Temp Bridge "TB" & "TC" Design - Resubmission	30	23-Jun-14	22-Jul-14																	
0240-1170	HGHK Permanent Carpark Design - Prep & Submit	90	01-Jul-14*	28-Sep-14																	
<b>02.5 - Bridge Segment/Beam Off-site Precasting</b>																					
0250-1720.04	Precast Beam Bridge E E1D1-G	0	27-Jan-14 A	11-Mar-14 A	Bridge E E1D1-G																
0250-1720.05	Precast Beam Bridge E 1819-A	0	10-Mar-14 A	19-Apr-14 A	Precast Beam Bridge E 1819-A																
0250-1720.06	Precast Beam Bridge E 1819-B	6	21-Mar-14 A	25-Apr-14	Precast Beam Bridge E 1819-B																
0250-1720.07	Precast Beam Bridge E 1819-C	18	26-Apr-14 A	07-May-14	Precast Beam Bridge E 1819-C																
0250-1720.08	Precast Beam Bridge E 1819-D	18	26-Apr-14	13-May-14	Precast Beam Bridge E 1819-D																
0250-1720.09	Precast Beam Bridge E 1718-A	18	14-May-14	31-May-14	Precast Beam Bridge E 1718-A																
0250-1720.10	Precast Beam Bridge E 1718-B	18	01-Jun-14	18-Jun-14	Precast Beam Bridge E 1718-B																
0250-1650.20	Bridge D1 Pier D02 Precasting Segment (1-17) - Mould S1	0	23-Dec-13 A	28-Feb-14 A	Segment (1-17) - Mould S1																
0250-1900	Bridge C4 Pier 29 T-span Segment Off-site Casting (13 nos.)	0	11-Feb-14 A	29-Mar-14 A	Bridge C4 Pier 29 T-span Segment Off-site Casting (13 nos.)																
0250-1910	Bridge C4 Pier 30 T-span Segment Off-site Casting (11 nos.)	0	06-Mar-14 A	15-Apr-14 A	Bridge C4 Pier 30 T-span Segment Off-site Casting (11 nos.)																
0250-1920	Bridge C4 Pier 31 T-span Segment Off-site Casting (13 nos.)	28	14-Apr-14 A	17-May-14	Bridge C4 Pier 31 T-span Segment Off-site Casting (13 nos.)																
0250-1930	Bridge C4 Pier 28 End-span Segment Off-site Casting (5 nos.)	15	20-Apr-14	04-May-14	Bridge C4 Pier 28 End-span Segment Off-site Casting (5 nos.)																
0250-1940	Bridge C4 Pier 32 End-span Segment Off-site Casting (5 nos.)	15	11-May-14	25-May-14	Bridge C4 Pier 32 End-span Segment Off-site Casting (5 nos.)																
0250-1950	Bridge C5 Pier 33 T-span Segment Off-site Casting (11 nos.)	27	22-May-14	17-Jun-14	Bridge C5 Pier 33 T-span Segment Off-site C																
0250-1970	Bridge C5 Pier 32 End-span Segment Off-site Casting (6 nos.)	18	30-May-14	16-Jun-14	Bridge C5 Pier 32 End-span Segment Off-site																
0250-1960	Bridge C5 Pier 34 T-span Segment Off-site Casting (9 nos.)	23	22-Jun-14	14-Jul-14	Bridge C5																
0250-1980	Bridge C5 Abut D12 E-span Segment Off-site Casting (6 nos.)	19	23-Jun-14	11-Jul-14	Bridge C5																
0250-2010	Bridge C3 Pier 28 End-span Segment Off-site Casting (6 nos.)	19	12-Jul-14	30-Jul-14																	
0250-1990	Bridge C3 Pier 27 T-span Segment Off-site Casting (11 nos.)	27	15-Jul-14	10-Aug-14																	
<b>03 - PRELIMINARY WORKS</b>																					
<b>03.3 - Interface Works</b>																					
0330-1300	Erect Interim Temp Carpark for HGHK	0	10-Feb-14 A	12-Mar-14 A	Temp Carpark for HGHK																
0330-1350	Erect Special Hoarding at Portion IVB	36	22-Apr-14	04-Jun-14	Erect Special Hoarding at Portion IVB																
<b>05 - SECTION 2 &amp; 2A OF THE WORKS</b>																					
<b>05.1 - Cut &amp; Cover Tunnel Ch 4855-4932 (APS Footprint)</b>																					
<b>05.1.2 - ELS</b>																					
0512-1105	S3 (-5.5mPD) - S1-S3 Excav (6336m3)	0	14-Feb-14 A	09-Mar-14 A	S1-S3 Excav (6336m3)																
0512-1107	Lev 3A (-5.5mPD) - S1-S3 ELS	0	10-Mar-14 A	20-Mar-14 A	Lev 3A (-5.5mPD) - S1-S3 ELS																
0512-1140	S3 (-5.5mPD) - S8 Excav (5940m3)	0	19-Feb-14 A	06-Mar-14 A	S3 (-5.5mPD) - S8 Excav (5940m3)																
0512-1145	S3 (-5.5mPD) - S8 ELS	0	07-Mar-14 A	16-Mar-14 A	S3 (-5.5mPD) - S8 ELS																
0512-1149	Lev 4B S4 (-9.5mPD) - S8 Excav (5940m3)	0	17-Mar-14 A	12-Apr-14 A	Lev 4B S4 (-9.5mPD) - S8 Excav (5940m3)																
0512-1150	Lev 4A (-9.5mPD) - S1-S3 Excav (6336m3)	0	21-Mar-14 A	09-Apr-14 A	Lev 4A (-9.5mPD) - S1-S3 Excav (6336m3)																
0512-1153	Install additional Dewatering Wells + Pump Test	0	31-Mar-14 A	13-Apr-14 A	Install additional Dewatering Wells + Pump Test																

- █ Remaining Level of Effort
- █ Actual Level of Effort
- █ Actual Work
- █ Remaining Work
- █ Critical Remaining Work
- ◆ Milestone

**Contract HY/2009/19**

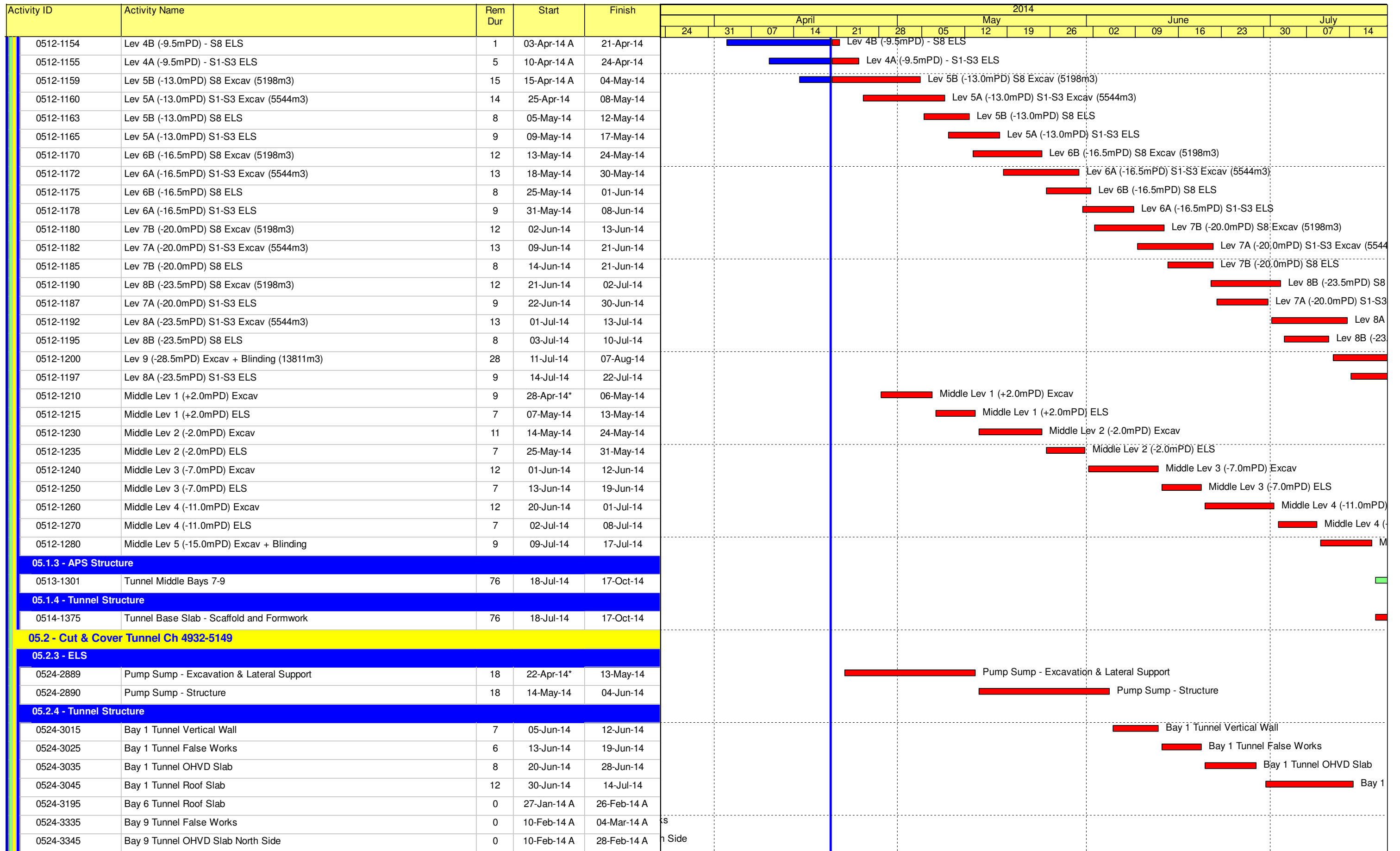
**Three Month Rolling Programme (20 Apr to 19 Jul 2014)**

3MRP

3MRP - Apr 2014 to Jul 2014

Page 2 of 10





- Remaining Level of Effort
- Actual Level of Effort
- Actual Work
- Remaining Work
- Critical Remaining Work
- ◆ Milestone

**Contract HY/2009/19**  
**Three Month Rolling Programme (20 Apr to 19 Jul 2014)**

3MRP  
 3MRP - Apr 2014 to Jul 2014  
 Page 3 of 10

Activity ID	Activity Name	Rem Dur	Start	Finish	2014													
					April					May				June				July
					24	31	07	14	21	28	05	12	19	26	02	09	16	23
0524-3355	Bay 9 Tunnel Roof Slab	0	05-Mar-14 A	18-Mar-14 A	Bay 9 Tunnel Roof Slab													
0524-3115	Bay 2 Tunnel Vertical Wall	7	27-May-14	04-Jun-14	Bay 2 Tunnel Vertical Wall													
0524-3125	Bay 2 Tunnel False Works	6	05-Jun-14	11-Jun-14	Bay 2 Tunnel False Works													
0524-3135	Bay 2 Tunnel OHVD Slab	8	12-Jun-14	20-Jun-14	Bay 2 Tunnel OHVD Slab													
0524-3145	Bay 2 Tunnel Roof Slab	12	21-Jun-14	05-Jul-14	Bay 2 Tunnel Roof													
0524-3395	Bay 7 Tunnel False Works	0	12-Feb-14 A	26-Feb-14 A														
0524-3405	Bay 7 Tunnel OHVD Slab	0	17-Feb-14 A	10-Mar-14 A	VD Slab													
0524-3415	Bay 7 Tunnel Roof Slab	0	10-Mar-14 A	26-Mar-14 A	Bay 7 Tunnel Roof Slab													
0524-3445	Bay 8 Tunnel False Works	0	12-Feb-14 A	26-Feb-14 A														
0524-3455	Bay 8 Tunnel OHVD Slab	0	17-Feb-14 A	10-Mar-14 A	VD Slab													
0524-3465	Bay 8 Tunnel Roof Slab	0	07-Mar-14 A	29-Mar-14 A	Bay 8 Tunnel Roof Slab													
0524-3495	Bay 10 Tunnel Vertical Wall	0	13-Mar-14 A	17-Mar-14 A	Tunnel Vertical Wall													
0524-3505	Bay 10 Tunnel False Works	0	20-Mar-14 A	26-Mar-14 A	Bay 10 Tunnel False Works													
0524-3515	Bay 10 Tunnel OHVD Slab	0	27-Mar-14 A	03-Apr-14 A	Bay 10 Tunnel OHVD Slab													
0524-3525	Bay 10 Tunnel Roof Slab	4	04-Apr-14 A	25-Apr-14	Bay 10 Tunnel Roof Slab													
0524-3535	Bay 11 Tunnel Base Slab	0	06-Feb-14 A	10-Mar-14 A	Base Slab													
0524-3545	Bay 11 Tunnel Vertical Wall	0	17-Mar-14 A	25-Mar-14 A	Bay 11 Tunnel Vertical Wall													
0524-3555	Bay 11 Tunnel False Works	0	27-Mar-14 A	02-Apr-14 A	Bay 11 Tunnel False Works													
0524-3565	Bay 11 Tunnel OHVD Slab	0	03-Apr-14 A	12-Apr-14 A	Bay 11 Tunnel OHVD Slab													
0524-3575	Bay 11 Tunnel Roof Slab	6	14-Apr-14 A	28-Apr-14	Bay 11 Tunnel Roof Slab													
0524-3585	Bay 12 Tunnel Base Slab	0	27-Feb-14 A	08-Mar-14 A	Slab													
0524-3595	Bay 12 Tunnel Vertical Wall	0	20-Mar-14 A	28-Mar-14 A	Bay 12 Tunnel Vertical Wall													
0524-3605	Bay 12 Tunnel False Works	0	29-Mar-14 A	02-Apr-14 A	Bay 12 Tunnel False Works													
0524-3615	Bay 12 Tunnel OHVD Slab	1	03-Apr-14 A	22-Apr-14	Bay 12 Tunnel OHVD Slab													
0524-3625	Bay 12 Tunnel Roof Slab	9	23-Apr-14	03-May-14	Bay 12 Tunnel Roof Slab													
0524-3635	Bay 13 Tunnel Base Slab	0	03-Mar-14 A	10-Mar-14 A	Base Slab													
0524-3645	Bay 13 Tunnel Vertical Wall	0	21-Mar-14 A	29-Mar-14 A	Bay 13 Tunnel Vertical Wall													
0524-3655	Bay 13 Tunnel False Works	0	29-Mar-14 A	19-Apr-14 A	Bay 13 Tunnel False Works													
0524-3665	Bay 13 Tunnel OHVD Slab	5	18-Apr-14 A	26-Apr-14	Bay 13 Tunnel OHVD Slab													
0524-3675	Bay 13 Tunnel Roof Slab	10	28-Apr-14	09-May-14	Bay 13 Tunnel Roof Slab													
0524-3475	Waterproof Top Slab Bay 5 to Bay 9	12	19-May-14	31-May-14	Waterproof Top Slab Bay 5 to Bay 9													
0524-3685	Waterproof Top Slab Bays 12 and 13	12	19-May-14	31-May-14	Waterproof Top Slab Bays 12 and 13													
0524-3365	Waterproof Top Slab Bay 1 to Bay 4	14	15-Jul-14	30-Jul-14														
<b>05.2.5 - Road &amp; Miscellaneous Works</b>																		
0525-2940	Backfill above Tunnel Structure Bay 5 to Bay 9	15	26-May-14	12-Jun-14	Backfill above Tunnel Structure Bay 5 to Bay 9													
0525-2950	Backfill above Tunnel Structure Bay 10 to Bay 13	15	26-May-14	12-Jun-14	Backfill above Tunnel Structure Bay 10 to Bay 13													
0525-2890	Tunnel Road Drainage (excl vent bldg)	45	15-Jul-14	04-Sep-14														
<b>06 - SECTION 3 OF THE WORKS</b>																		
<b>06.1 - Westbound - Pier 29-34</b>																		
0610-2126	Pier 29-3 Bored Pile (Normal)	18	22-Apr-14*	13-May-14	Pier 29-3 Bored Pile (Normal)													
<b>06.2 - Box Culvert U1</b>																		
0620-2632	1350mm Drainage MH 9-P to MH 3-1 Stage 1 - Sheet Pile	4	20-Mar-14 A	25-Apr-14	1350mm Drainage MH 9-P to MH 3-1 Stage 1 - Sheet Pile													
0620-2633	1350mm Drainage MH 9-P to MH 3-1 Stage 1 - Trench Excav	4	02-Apr-14 A	30-Apr-14	1350mm Drainage MH 9-P to MH 3-1 Stage 1 - Trench Excav													
0620-2634	1350mm Drainage MH 9-P to MH 3-1 Stage 1 - Pipe Laying	2	02-May-14	03-May-14	1350mm Drainage MH 9-P to MH 3-1 Stage 1 - Pipe Laying													

- █ Remaining Level of Effort
- █ Actual Level of Effort
- █ Actual Work
- █ Remaining Work
- █ Critical Remaining Work
- ◆ Milestone

**Contract HY/2009/19**

**Three Month Rolling Programme (20 Apr to 19 Jul 2014)**

3MRP

3MRP - Apr 2014 to Jul 2014

Page 4 of 10

Activity ID	Activity Name	Rem Dur	Start	Finish	2014														
					April				May				June				July		
					24	31	07	14	21	28	05	12	19	26	02	09	16	23	30
0620-2635	1350mm Drainage MH 9-P to MH 3-1 Stage 1 - Backfill/Extract Sheet Pile	9	05-May-14	14-May-14															
0620-2636	1350mm Drainage MH 9-P to MH 3-1 Stage 2 - Remove Pavement	7	15-May-14	22-May-14															
0620-2637	1350mm Drainage MH 9-P to MH 3-1 Stage 2 - Sheet Pile	12	23-May-14	06-Jun-14															
0620-2638	1350mm Drainage MH 9-P to MH 3-1 Stage 2 - Trench Excav	9	07-Jun-14	17-Jun-14															
0620-2639	1350mm Drainage MH 9-P to MH 3-1 Stage 2 - Pipe Laying	3	18-Jun-14	20-Jun-14															
0620-2641	1350mm Drainage MH 9-P to MH 3-1 Stage 2 - Backfill/Extract Sheet Pile	7	21-Jun-14	28-Jun-14															
0620-2642	1500mm Drainage MH 3-1 to MH 3-2 - Sheet Pile	12	23-May-14	06-Jun-14															
0620-2643	1500mm Drainage MH 3-1 to MH 3-2 - Trench Excav	9	18-Jun-14	27-Jun-14															
0620-2644	1500mm Drainage MH 3-1 to MH 3-2 - Pipe Laying	3	30-Jun-14	03-Jul-14															
0620-2645	1500mm Drainage MH 3-1 to MH 3-2 - Construct MH 3-1	12	04-Jul-14	17-Jul-14															
0620-2646	1500mm Drainage MH 3-1 to MH 3-2 - Backfill/Extract Sheet Pile	12	11-Jul-14	24-Jul-14															
0620-2631	1350mm Drainage MH 9-P to MH 3-1 Stage 1 - Remove Pavement	0	10-Mar-14 A	19-Mar-14 A															
<b>06.3 - Admin Building</b>																			
0630-3100	Predrill for Adm Building (27 no) (3 set)	0	31-Oct-13 A	11-Mar-14 A															
0630-3105	Admin Bldg Pile G.I. Report / Founding Level	0	13-Jan-14 A	19-Mar-14 A															
0630-3111	Admin Bldg Pre-bored H-pile GL A-F (31 nos.) - Drilling	48	27-Feb-14 A	18-Jun-14															
0630-3112	Admin Bldg Pre-bored H-pile GL A-F (31 nos.) - H-beam Install + Grouting	61	27-Mar-14 A	04-Jul-14															
0630-3121	Admin Bldg Pre-bored H-pile GL G-N (24 nos.) - Drilling	36	21-Feb-14 A	04-Jun-14															
0630-3122	Admin Bldg Pre-bored H-pile GL G-N (24 nos.) - H-beam Install + Grouting	61	21-Mar-14 A	04-Jul-14															
0630-3131	Admin Bldg Pre-bored H-pile GL P-Q (10 nos.) - Drilling	30	05-Jun-14	10-Jul-14															
0630-3132	Admin Bldg Pre-bored H-pile GL P-Q (10 nos.) - H-beam + Grouting	28	26-Jun-14	29-Jul-14															
<b>09 - SECTION 6 OF THE WORKS</b>																			
<b>09.2 - Westbound - Pier 26-27</b>																			
0920-2100	Pre-drilling for Piling at IVB (pier 26) (possession on 25Feb14) (2 no)	12	02-Jul-14*	15-Jul-14															
0920-2105	Pier 26 Pile G.I. Final Report / Founding Level	12	16-Jul-14	29-Jul-14															
<b>10 - SECTION X OF THE WORKS</b>																			
<b>10.1 - E/B Bridges (Bridge D, E and F)</b>																			
<b>10.1.1 - Marine Pier Construction</b>																			
<b>Pier F03 to F15</b>																			
1011-2433	F10 Bearing Installation	0	22-Feb-14 A	28-Feb-14 A															
1011-2375	F11 Bearing Installation	0	12-Mar-14 A	22-Mar-14 A															
1011-2495	F13 Bearing Installation	0	01-Mar-14 A	07-Mar-14 A															
1011-2525	F14 Bearing Installation	0	05-Mar-14 A	11-Mar-14 A															
1011-3175	F10 Dolphin Construction	0	02-Dec-13 A	04-Mar-14 A															
1011-3185	F9 Dolphin Construction	0	09-Dec-13 A	15-Mar-14 A															
1011-3195	F8 Dolphin Construction	0	16-Dec-13 A	24-Mar-14 A															
1011-3205	F11 Dolphin Construction	9	11-Mar-14 A	02-May-14															
1011-3215	F12 Dolphin Construction	15	16-Mar-14 A	09-May-14															
1011-3225	F6 Dolphin Construction	21	22-Mar-14 A	16-May-14															
1011-3235	F7 Dolphin Construction	27	26-Mar-14 A	23-May-14															
1011-3255	F5 Dolphin Construction	30	25-Apr-14	30-May-14															
1011-3245	F13 Dolphin Construction	30	03-May-14	07-Jun-14															
1011-3265	F14 Dolphin Construction	30	10-May-14	14-Jun-14															
1011-3271	F4 Dolphin Construction	24	22-Apr-14*	20-May-14															

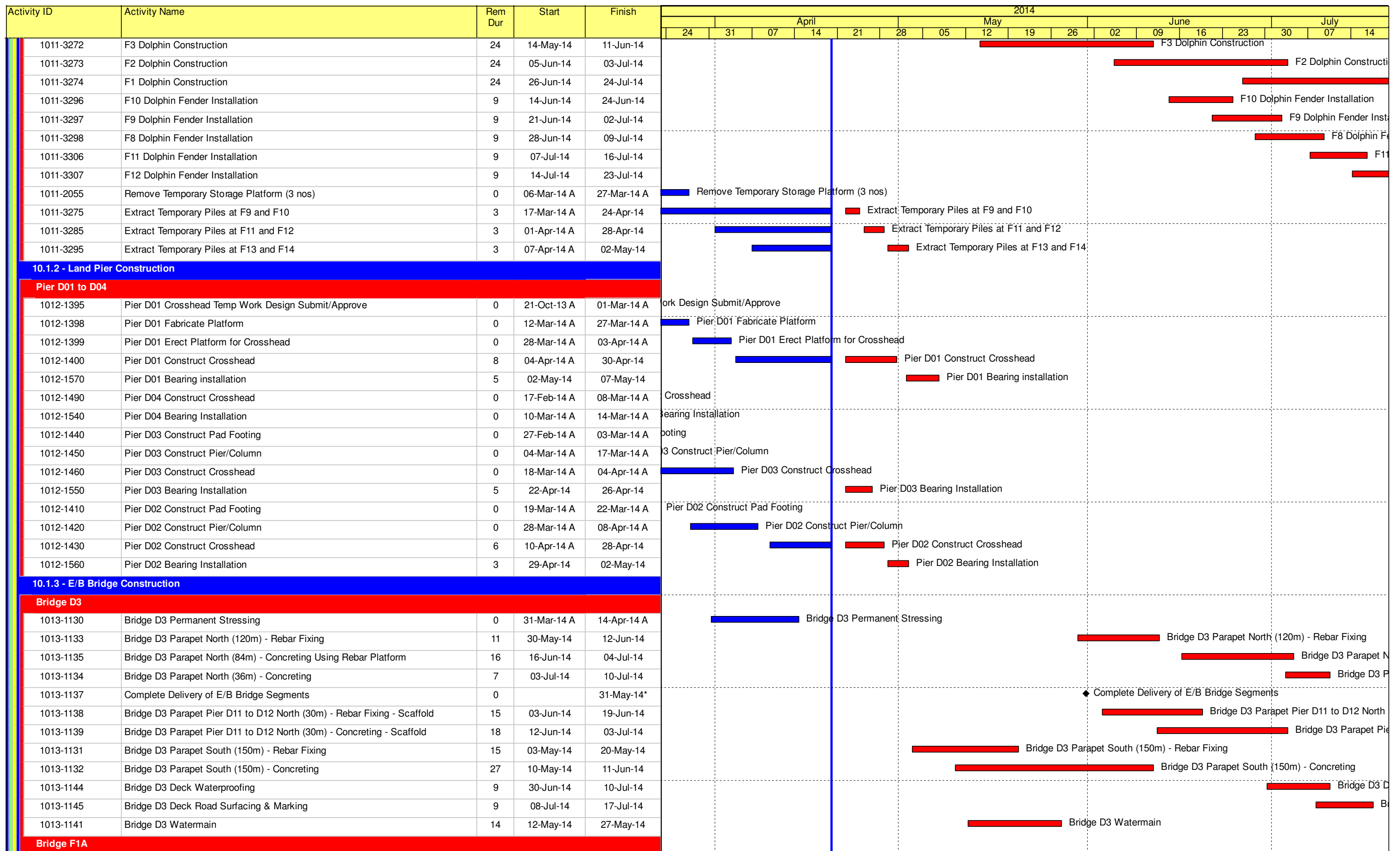
- █ Remaining Level of Effort
- █ Actual Level of Effort
- █ Actual Work
- █ Remaining Work
- █ Critical Remaining Work
- ◆ Milestone

**Contract HY/2009/19**

**Three Month Rolling Programme (20 Apr to 19 Jul 2014)**

3MRP

3MRP - Apr 2014 to Jul 2014



- Remaining Level of Effort
- Actual Level of Effort
- Actual Work
- Remaining Work
- Critical Remaining Work
- Milestone

Contract HY/2009/19

Three Month Rolling Programme (20 Apr to 19 Jul 2014)

3MRP

3MRP - Apr 2014 to Jul 2014

Page 6 of 10



Activity ID	Activity Name	Rem Dur	Start	Finish	2014																	
					April					May				June				July				
					24	31	07	14	21	28	05	12	19	26	02	09	16	23	30	07	14	
1013-1230	Bridge F1A Permanent Stressing	0	03-Mar-14 A	14-Mar-14 A	Permanent Stressing																	
1013-1255	Bridge F1A Parapet North (85m) - Rebar Fixing	8	02-May-14	10-May-14	Bridge F1A Parapet North (85m) - Rebar Fixing																	
1013-1256	Bridge F1A Parapet North (85m) - Concreting	16	08-May-14	26-May-14	Bridge F1A Parapet North (85m) - Concreting																	
1013-1251	Erect Parapet Travelling Rebar Platform 2 at Bridge F1A South	4	22-Apr-14	25-Apr-14	Erect Parapet Travelling Rebar Platform 2 at Bridge F1A South																	
1013-1252	Erect Parapet Travelling Shutter 2 at Bridge F1A South	4	26-Apr-14	30-Apr-14	Erect Parapet Travelling Shutter 2 at Bridge F1A South																	
1013-1253	Bridge F1A Parapet South (28m) - Rebar Fixing	4	26-Apr-14	30-Apr-14	Bridge F1A Parapet South (28m) - Rebar Fixing																	
1013-1254	Bridge F1A Parapet South (28m) - Concreting	7	02-May-14	09-May-14	Bridge F1A Parapet South (28m) - Concreting																	
1013-1257	Bridge F1A South Wing Extension Drill-in Rebar	18	10-Apr-14 A	13-May-14	Bridge F1A South Wing Extension Drill-in Rebar																	
1013-1258	Bridge F1A South Wing Extension Formwork + Casting	18	30-Apr-14	21-May-14	Bridge F1A South Wing Extension Formwork + Casting																	
1013-1261	Bridge F1A Watermain	14	12-May-14*	27-May-14	Bridge F1A Watermain																	
1013-1265	Bridge F1A Deck Waterproofing	9	11-Jul-14	21-Jul-14	Bridge F1A Deck Waterproofing																	
1013-1266	Bridge F1A Deck Road Surfacing & Marking	9	18-Jul-14	28-Jul-14	Bridge F1A Deck Road Surfacing & Marking																	
<b>Bridge F2A</b>																						
1013-1350	Bridge F2A Permanent Stressing	0	20-Feb-14 A	28-Feb-14 A	Bridge F2A Permanent Stressing																	
1013-1360	Deliver Parapet Travelling Shutter and Rebar Platform	0	31-Mar-14 A		Deliver Parapet Travelling Shutter and Rebar Platform																	
1013-1361	Erect Parapet Rebar Platform 1 at Bridge F2A North	0	31-Mar-14 A	12-Apr-14 A	Erect Parapet Rebar Platform 1 at Bridge F2A North																	
1013-1362	Erect Parapet Travelling Shutter 1 at Bridge F2A North	0	14-Apr-14 A	19-Apr-14 A	Erect Parapet Travelling Shutter 1 at Bridge F2A North																	
1013-1363	Bridge F2A Parapet North (12m) - Concreting	4	22-Apr-14	25-Apr-14	Bridge F2A Parapet North (12m) - Concreting																	
1013-1368	Bridge F2A Parapet North (12m) - Rebar Fixing	2	14-Apr-14 A	23-Apr-14	Bridge F2A Parapet North (12m) - Rebar Fixing																	
1013-1369	Bridge F2A Parapet North (48m) - Rebar Fixing	5	24-Apr-14	29-Apr-14	Bridge F2A Parapet North (48m) - Rebar Fixing																	
1013-1365	Bridge F2A Parapet North (48m) - Concreting	9	26-Apr-14	07-May-14	Bridge F2A Parapet North (48m) - Concreting																	
1013-1366	Bridge F2A South Wing Extension Drill-in Rebar	18	14-May-14	04-Jun-14	Bridge F2A South Wing Extension Drill-in Rebar																	
1013-1367	Bridge F2A South Wing Extension Formwork + Casting	18	22-May-14	12-Jun-14	Bridge F2A South Wing Extension Formwork + Casting																	
1013-1371	Bridge F2A Watermain	14	28-May-14	13-Jun-14	Bridge F2A Watermain																	
1013-1374	Bridge F2A Deck Waterproofing	9	11-Jul-14	21-Jul-14	Bridge F2A Deck Waterproofing																	
1013-1375	Bridge F2A Deck Road Surfacing & Marking	9	18-Jul-14	28-Jul-14	Bridge F2A Deck Road Surfacing & Marking																	
<b>Bridge F3A</b>																						
1013-1310	Bridge F3A Segment Launching from Pier F7 (13 nos)	0	17-Feb-14 A	24-Feb-14 A	Bridge F3A Segment Launching from Pier F7 (13 nos)																	
1013-1320	Bridge F3A Segment Launching from Pier F8 (6 nos)	0	25-Feb-14 A	28-Feb-14 A	Bridge F3A Segment Launching from Pier F8 (6 nos)																	
1013-1390	Bridge F3A Stitching at midspan between F6 and F7	0	26-Feb-14 A	01-Mar-14 A	Bridge F3A Stitching at midspan between F6 and F7																	
1013-1400	Bridge F3A Stitching at midspan between F7 and F8	0	03-Mar-14 A	05-Mar-14 A	Bridge F3A Stitching at midspan between F7 and F8																	
1013-1410	Bridge F3A Permanent Stressing	0	15-Mar-14 A	29-Mar-14 A	Bridge F3A Permanent Stressing																	
1013-1431	Back Launching LG to Pier D11	0	17-Mar-14 A	22-Mar-14 A	Back Launching LG to Pier D11																	
1013-1810	Remove Portal Gantry at D10	0	04-Mar-14 A	17-Mar-14 A	Remove Portal Gantry at D10																	
1013-1820	Back Launching LG to Pier D7	0	03-Mar-14 A	17-Mar-14 A	Back Launching LG to Pier D7																	
1013-1830	LG Modification	0	24-Mar-14 A	14-Apr-14 A	LG Modification																	
1013-1840	Launch Forward LG to Pier D4	0	14-Apr-14 A	19-Apr-14 A	Launch Forward LG to Pier D4																	
1013-1428	Bridge F3A Deck Waterproofing	9	11-Jul-14	21-Jul-14	Bridge F3A Deck Waterproofing																	
1013-1430	Bridge F3A Deck Road Surfacing & Marking	9	18-Jul-14	28-Jul-14	Bridge F3A Deck Road Surfacing & Marking																	
<b>Bridge F5/F4</b>																						
1013-1433	Bridge F5 - Pier F8 Crosshead Upstand + Bearing	4	02-Apr-14 A	25-Apr-14	Bridge F5 - Pier F8 Crosshead Upstand + Bearing																	
1013-1438	Bridge F4 - Pier F9 to F10 Diaphragm	6	22-Apr-14	28-Apr-14	Bridge F4 - Pier F9 to F10 Diaphragm																	
1013-1434	Bridge F5 - Pier F8 to F9 Beam (2 nos.) Erection + Adjustment	3	26-Apr-14	29-Apr-14	Bridge F5 - Pier F8 to F9 Beam (2 nos.) Erection + Adjustment																	
1013-1437	Bridge F4 - Pier F9 to F10 Beam (2 nos.) Erection + Adjustment	0	09-Apr-14 A	11-Apr-14 A	Bridge F4 - Pier F9 to F10 Beam (2 nos.) Erection + Adjustment																	

- Remaining Level of Effort
- Actual Level of Effort
- Actual Work
- Remaining Work
- Critical Remaining Work
- ◆ Milestone

**Contract HY/2009/19**

**Three Month Rolling Programme (20 Apr to 19 Jul 2014)**

3MRP

3MRP - Apr 2014 to Jul 2014

Page 7 of 10

Activity ID	Activity Name	Rem Dur	Start	Finish	2014																			
					April					May					June					July				
					24	31	07	14	21	28	05	12	19	26	02	09	16	23	30	07	14			
1013-1439	Bridge F4 - Pier F9 to F10 Top Slab	12	29-Apr-14	13-May-14																				
1013-1435	Bridge F5 - Pier F8 to F9 Diaphragm	6	30-Apr-14	07-May-14																				
1013-1436	Bridge F5 - Pier F8 to F9 Top Slab	12	08-May-14	21-May-14																				
1013-1445	Bridge F4 - Pier F10 to F15 Beam Erection + Adjustment	9	03-May-14	13-May-14																				
1013-1446	Bridge F4 - Pier F10 to F15 Diaphragm	15	14-May-14	30-May-14																				
1013-1447	Bridge F4 - Pier F10 to F15 Top Slab	30	21-May-14	25-Jun-14																				
1013-1448	Bridge F4 - Pier F10 to F15 Connection to Existing IEC	30	12-Jun-14	17-Jul-14																				
1013-1454	Bridge F4/F5 Deck Waterproofing	9	15-Jul-14	24-Jul-14																				
<b>Bridge D2</b>																								
1013-1500	Bridge D2 Segment Launching by Crane Pier D05 T-span (17 nos)	0	12-Feb-14 A	11-Mar-14 A																				
1013-1520	Bridge D2 Stitching at midspan between D06-D07	0	13-Mar-14 A	15-Mar-14 A																				
1013-1540	Bridge D2 Stitching at midspan between D05-D06	0	20-Mar-14 A	22-Mar-14 A																				
1013-1850	Bridge D2 Erect Pier Segment at Pier D04 by Crane	0	24-Mar-14 A	31-Mar-14 A																				
1013-1510	Bridge D2 End-span Segment Launching at Pier D04 (8 nos)	6	20-Apr-14	25-Apr-14																				
1013-1550	Bridge D2 Stitching at midspan between D04-D05	2	26-Apr-14	27-Apr-14																				
1013-1515	Launch Forward LG to Pier D03	1	27-Apr-14	27-Apr-14																				
1013-1560	Bridge D2 Permanent Stressing	2	28-Apr-14	29-Apr-14																				
1013-1565	Bridge D2 Parapet North (160m) - Rebar Fixing	14	13-May-14	28-May-14																				
1013-1566	Bridge D2 Parapet North (160m) - Concreting	28	28-May-14	30-Jun-14																				
1013-1562	Bridge D2 Parapet South (160m) - Rebar Fixing	15	22-May-14	09-Jun-14																				
1013-1563	Bridge D2 Parapet South (84m) - Concreting Using Rebar Platform	16	12-Jun-14	30-Jun-14																				
1013-1564	Bridge D2 Parapet South (76m) - Concreting	16	13-Jun-14	02-Jul-14																				
1013-1571	Bridge D2 Watermain	14	28-May-14	13-Jun-14																				
1013-1860	Bridge D2 Deck Waterproofing	9	28-Jun-14	09-Jul-14																				
1013-1561	Bridge D2 Deck Road Surfacing & Marking	9	07-Jul-14	16-Jul-14																				
<b>Bridge D1</b>																								
1013-1591	Bridge D1 Pier Segment Erection at Pier D03	4	28-Apr-14	02-May-14																				
1013-1592	Launch Forward LG to Pier D02	1	03-May-14	03-May-14																				
1013-1593	Bridge D1 Pier Segment Erection at Pier D02	4	05-May-14	08-May-14																				
1013-1600	Bridge D1 Segment Launching T-span Pier D03 (16 nos)	4	09-May-14	13-May-14																				
1013-1605	Bridge D1 Segment Launching End-span at Pier D04 (7 nos)	4	14-May-14	17-May-14																				
1013-1606	Bridge D1 Stitching at midspan between D03-D04	5	19-May-14	23-May-14																				
1013-1607	Launch Forward LG to Pier D01	1	29-May-14	29-May-14																				
1013-1608	Bridge D1 Pier Segment Erection at Pier D01	3	30-May-14	03-Jun-14																				
1013-1610	Bridge D1 Segment Launching from Pier D02 (16 nos)	7	04-Jun-14	11-Jun-14																				
1013-1620	Bridge D1 Segment Launching from Pier D01 (8 nos)	4	12-Jun-14	16-Jun-14																				
1013-1640	Bridge D1 Stitching at midspan between D02-D03	3	12-Jun-14	14-Jun-14																				
1013-1650	Bridge D1 Stitching at midspan between D01-D02	3	17-Jun-14	19-Jun-14																				
1013-1660	Bridge D1 Permanent Stressing	5	20-Jun-14	25-Jun-14																				
1013-1704	Bridge D1 Parapet North (120m) - Rebar Fixing	11	08-Jul-14	19-Jul-14																				
1013-1705	Bridge D1 Parapet North (84m) - Concreting	15	12-Jul-14	29-Jul-14																				
1013-1701	Bridge D1 Parapet South (120m) - Rebar Fixing	12	03-Jul-14	16-Jul-14																				
1013-1702	Bridge D1 Parapet South (84m) - Concreting	17	08-Jul-14	26-Jul-14																				
1013-1703	Bridge D1 Parapet South (36m) - Concreting Using Rebar Platform	8	19-Jul-14	28-Jul-14																				

- Remaining Level of Effort
- Actual Level of Effort
- Actual Work
- Remaining Work
- Critical Remaining Work
- ◆ Milestone

**Contract HY/2009/19**

**Three Month Rolling Programme (20 Apr to 19 Jul 2014)**

3MRP

3MRP - Apr 2014 to Jul 2014

Activity ID	Activity Name	Rem Dur	Start	Finish	2014															
					April				May				June				July			
					24	31	07	14	21	28	05	12	19	26	02	09	16	23	30	07
1013-1711	Bridge D1 Watermain	12	26-Jun-14	10-Jul-14	Bridge D1 Watermain															
<b>All E/B Bridges (Common)</b>																				
1013-1780	Parapet Temp. Work Design + ICE	0	11-Feb-14 A	29-Mar-14 A	Parapet Temp. Work Design + ICE															
1013-1790	Parapet Temp. Work Design ER No Adverse Comment	0	31-Mar-14 A	17-Apr-14 A	Parapet Temp. Work Design ER No Adverse Comment															
1013-1800	Parapet Temp. Work Fabrication	0	17-Mar-14 A	29-Mar-14 A	Parapet Temp. Work Fabrication															
1013-1811	Construct Int. Double Noise Encl. Bridge F1A /F2A (111m)	42	24-May-14	14-Jul-14	Construct Int. Double Noise Encl. Bridge F1A /F2A (111m)															
1013-1821	E/B Bridge Temp. Hydrant + Watermain Testing	24	11-Jul-14	07-Aug-14	E/B Bridge Temp. Hydrant + Watermain Testing															
<b>10.1.4 - Bridge E / Hing Fat Slip Road</b>																				
<b>Pier Construction</b>																				
1014-1050	Pier E1b Construct Crosshead	0	20-Feb-14 A	09-Apr-14 A	Pier E1b Construct Crosshead															
1014-1080	Pier E1a Construct Crosshead	0	20-Feb-14 A	09-Apr-14 A	Pier E1a Construct Crosshead															
1014-1090	Pier E1a/E1b Bearing installation	0	10-Apr-14 A	14-Apr-14 A	Pier E1a/E1b Bearing installation															
<b>Bridge Construction</b>																				
1014-1171	Bridge E - Pier E1 to E2 - Precast Beam (3 nos.) + Adjustment	0	15-Apr-14 A	19-Apr-14 A	Bridge E - Pier E1 to E2 - Precast Beam (3 nos.) + Adjustment															
1014-1172	Bridge E - Pier E1 to E2 - Diaphragm	7	22-Apr-14	29-Apr-14	Bridge E - Pier E1 to E2 - Diaphragm															
1014-1173	Bridge E - Pier E1 to E2 - Top Slab	7	30-Apr-14	08-May-14	Bridge E - Pier E1 to E2 - Top Slab															
1014-1174	Bridge E - Pier E1 to E2 - Temporary Parapet	7	09-May-14	16-May-14	Bridge E - Pier E1 to E2 - Temporary Parapet															
1014-1175	Bridge E - Pier E1 to D1 - Precast Beam (3 nos.)	3	15-May-14	17-May-14	Bridge E - Pier E1 to D1 - Precast Beam (3 nos.)															
1014-1176	Bridge E - Pier E1 to D1 - Diaphragm	7	26-Jun-14	04-Jul-14	Bridge E - Pier E1 to D1 - Diaphragm															
1014-1177	Bridge E - Pier E1 to D1 - Top Slab	7	05-Jul-14	12-Jul-14	Bridge E - Pier E1 to D1 - Top Slab															
1014-1178	Bridge E - Pier E1 to D1 - Temporary Parapet	7	14-Jul-14	21-Jul-14	Bridge E - Pier E1 to D1 - Temporary Parapet															
<b>10.2 - W/B Bridges (Bridge C and F)</b>																				
<b>10.2.1 - Pier Construction</b>																				
<b>Pier 20 to 25</b>																				
1021-1010	Pier 23 Pre-drilling for Piling (2 nos.)	6	07-Jul-14*	12-Jul-14	Pier 23 Pre-drilling for Piling (2 nos.)															
1021-1015	Pier 23 Pile G.I. Final Report / Founding Level	18	14-Jul-14	02-Aug-14	Pier 23 Pile G.I. Final Report / Founding Level															
<b>10.5 - Temporary Bridge</b>																				
<b>10.5.1 - Temporary Bridge 'TA'</b>																				
1051-1017	Temporary Bridge TA1 - Bridge Decking + Tie-in to Existing HFSR	6	23-Sep-13 A	10-May-14	Temporary Bridge TA1 - Bridge Decking + Tie-in to Existing HFSR															
1051-1018	Temporary Bridge TA1 - Parapet	6	13-Jan-14 A	10-May-14	Temporary Bridge TA1 - Parapet															
<b>10.5.3 - Temporary Bridge 'TD'</b>																				
1053-1010	"TD" - Pier F8 to F10 Tower Erection (3 nos.)	7	14-Apr-14 A	29-Apr-14	"TD" - Pier F8 to F10 Tower Erection (3 nos.)															
1053-1011	"TD" - Pier F8 to F10 Beam Erection	12	30-Apr-14	14-May-14	"TD" - Pier F8 to F10 Beam Erection															
1053-1012	"TD" - Pier F8 to F10 Bond Deck Erection	15	15-May-14	31-May-14	"TD" - Pier F8 to F10 Bond Deck Erection															
1053-1013	"TD" - Pier F8 to F10 Slab Construction	12	03-Jun-14	16-Jun-14	"TD" - Pier F8 to F10 Slab Construction															
1053-1014	"TD" - Pier F8 to F10 Parapet	12	17-Jun-14	30-Jun-14	"TD" - Pier F8 to F10 Parapet															
1053-1015	"TD" - Pier F8 to F10 Connection to Bridge F4/F5	18	17-Jun-14	08-Jul-14	"TD" - Pier F8 to F10 Connection to Bridge F4/F5															
1053-1021	"TD" - Pier F10 to F14 Tower Erection	18	24-May-14	14-Jun-14	"TD" - Pier F10 to F14 Tower Erection															
1053-1061	"TD" - Pier F10 to F14 Beam Erection	18	16-Jun-14	07-Jul-14	"TD" - Pier F10 to F14 Beam Erection															
1053-1062	"TD" - Pier F10 to F14 Bond Deck Erection	18	08-Jul-14	28-Jul-14	"TD" - Pier F10 to F14 Bond Deck Erection															
1053-1074	"TD" - Pier F5 to F8 Tower Erection	15	24-May-14	11-Jun-14	"TD" - Pier F5 to F8 Tower Erection															
1053-1094	"TD" - Pier F5 to F8 Beam Erection	18	05-Jun-14	25-Jun-14	"TD" - Pier F5 to F8 Beam Erection															
1053-1104	"TD" - Pier F5 to F8 Bond Deck Erection	18	16-Jun-14	07-Jul-14	"TD" - Pier F5 to F8 Bond Deck Erection															
1053-1114	"TD" - Pier F5 to F8 Slab Construction	18	26-Jun-14	17-Jul-14	"TD" - Pier F5 to F8 Slab Construction															

- █ Remaining Level of Effort
- █ Actual Level of Effort
- █ Actual Work
- █ Remaining Work
- █ Critical Remaining Work
- ◆ Milestone

**Contract HY/2009/19**

**Three Month Rolling Programme (20 Apr to 19 Jul 2014)**

3MRP

3MRP - Apr 2014 to Jul 2014

Page 9 of 10





Activity ID	Activity Name	Original Duration	Start	Finish	2014					
					Apr	May	Jun	Jul	Aug	
<b>HY/2010/08: CWB-SR8 Three Months Rolling Programme_updated up to 20140420</b>										
<b>Works in TS3</b>										
<b>TS3 East &amp; West Reclamation Works</b>										
<b>TS3E - Reclamation (Advance Works)</b>										
TS3E.MW.1080	TS3E South - Dredging Works (Type 3)	19	07-May-14*	28-May-14						
TS3E.MW.1085	TS3E South - Dredging Works (Type 1 & 2)	28	29-May-14*	02-Jul-14						
TS3E.MW.1140	C15 - Complete TZ2 (Forecast Completion of TZ2)	0		31-May-14*						
TS3E.MW.1090	TS3E South - Rockfill + Levelling	20	23-Jun-14	16-Jul-14						
TS3E.MW.1110	TS3E South - Commence Water Intake Diversion	0	30-Jun-14*							
TS3E.MW.1100	TS3E South - Seawall Block Installation	48	08-Jul-14	01-Sep-14						
<b>Works in SR8 (Open Cut Method)</b>										
<b>SR8 - Cofferdam &amp; Cut &amp; Cover Tunnel Works</b>										
<b>SR8 East Bound - (Seaside to Victoria Road / IEC Central Divider)</b>										
<b>TTA Stage 0 - East Bound</b>										
<b>Stage 1A - East Bound (Seaside) (Ref. DRG. No.CDD/SR8/082)</b>										
SR8.EB.1050	Carry out Stage 1A TAM Grout	10	22-Apr-14*	03-May-14						
<b>Gas Mains</b>										
SR8.EB.1290	Backfill Trench	2	14-Apr-14 A	22-Apr-14						
<b>Stage 1B - East Bound (Seaside) (Ref. DRG. No.CDD/SR8/082)</b>										
SR8.EB.1530	Pre-fabrication of Steel Traffic Deck	36	22-Apr-14*	05-Jun-14						
SR8.EB.1550	Re-Mobilise Rig / Plant to Seaside	4	23-Apr-14	26-Apr-14						
SR8.EB.1400	Carry-out pretreatment for Stage 1B Sheet Pile	4	25-Apr-14	29-Apr-14						
SR8.EB.1210	Carry-out preboring for Stage 1B Sheet Pile	6	30-Apr-14	08-May-14						
SR8.EB.1220	Carry-out Stage 1B Sheet Piling works	6	05-May-14	12-May-14						
SR8.EB.1140	Carry out Pipe Piling Work (A21-A24,A24a,A24b, A34-A35, B2-B8, B14-B18) 20nos.	20	09-May-14	31-May-14						
SR8.EB.1250	Install King Post for Traffic Deck (8 nos.)	13	26-May-14	10-Jun-14						
SR8.EB.1255	Carry-out Stage 1B TAM Grout + Jet Grouting (12nos)	6	30-May-14	06-Jun-14						
SR8.EB.1260	Construct Traffic Deck and Temporary Road (including Road Marking & Traffic Signage)s	18	05-Jun-14	25-Jun-14						
SR8.EB.1560	Road Works (including site formation, construction of subbase, asphalt & wearing course)	16	11-Jun-14	28-Jun-14						
SR8.EB.1270	Install Temporary Traffic Directional Signs for TTA Stage 1	6	30-Jun-14	07-Jul-14						
<b>TTA Stage 1 - East Bound</b>										
<b>Stage 2 - East Bound (Ref. DRG. No.CDD/SR8/083)</b>										
SR8.EB.1310	Implement TTA Stage 1 - Traffic Diversion at East Bound (DRG Ref. 4843/011/021E)	0	08-Jul-14							
SR8.EB.1315	Excavate Trench and Expose underground utilities (Carriage way)	8	08-Jul-14	16-Jul-14						



Activity ID	Activity Name	Original Duration	Start	Finish	2014					
					Apr	May	Jun	Jul	Aug	
SR8.EB.1320	Divert Gas Main to pre-laid Gas Main Pipe at Planter Area Gas Main Trough	18	17-Jul-14	06-Aug-14						
SR8.EB.1325	Protect and Shift HV 22kv Cable on carriage way (as required)	18	17-Jul-14	06-Aug-14						
SR8.EB.1327	Cut and By pass Drainage to the next (existing) collection point (MH)	18	17-Jul-14	06-Aug-14						
<b>SR8 West Bound - Ch. 369.000 to 495.000 (Victoria Road / IEC Central Divider)</b>										
<b>TTA Stage 0 (West Bound)</b>										
<b>Stage 1A - West Bound (Inside VP) (Ref. DRG. No.CDD/SR8/085)</b>										
SR8.WB.1080	Pipe Piling Work Row A (A119-A155) - 19nos	63	08-Jan-14 A	17-May-14						
SR8.WB.1035.1	Pipe Piling Works Row B (B83-B92, B101-B113) - 16nos	24	20-Feb-14 A	13-May-14						
SR8.WB.1100	Install King Post for Traffic Deck (9nos)	18	12-Mar-14 A	17-May-14						
<b>Stage 1B - West Bound (Inside VP) (Ref. DRG. No.CDD/SR8/085)</b>										
SR8.WB.1230	Carry out Stage 1B Pipe Piling Work A118, B93-B100 (9nos)	40	13-Mar-14 A	02-May-14						
SR8.WB.1112	Carry out TAM Grout	30	24-Mar-14 A	21-May-14						
SR8.WB.1250	Construction of Traffic Deck and Temporary Road	35	22-Apr-14*	04-Jun-14						
SR8.WB.1220	Carry out Stage 1B Sheet Pile Work	20	23-Apr-14*	17-May-14						
SR8.WB.1260	Remove the Temporary Working Platform	6	27-May-14	04-Jun-14						
SR8.WB.1270	Construction Road Marking & Traffic Signage	3	05-Jun-14	07-Jun-14						
<b>TTA Stage 1 - West Bound</b>										
<b>Stage 2A - West Bound (Ref. DRG. No.CDD/SR8/086)</b>										
SR8.WB.2010	Implement Traffic Diversion TTA Stage 1 at West Bound	0	04-Jun-14							
SR8.WB.2020	Carry out Stage 2A Sheet Pile Work	17	04-Jun-14	23-Jun-14						
SR8.WB.2030	Carry out Stage 2A Pipe Piling Work	56	17-Jun-14	21-Aug-14						
<b>SR8 Ch.369.000 to Ch.317.500 - (Inside Victoria Park to Tunnel Portal)</b>										
<b>Stage 4 - SR8 Ch.369.000 to Ch317.500 (Tunnel Portal) (Ref. DRG. No.CDD/SR8/087)</b>										
SR8.VP.4010	Carry Out Stage 4 Sheet Pile Works	90	14-Apr-14 A	18-Aug-14						
<b>Tsing Fung St - RW &amp; Subway Extension &amp; Toe Wall at Hing Fat St</b>										
<b>Ret. Wall &amp; TF Subway Extension (Portion V)</b>										
<b>Retaining Wall at Tsing Fung Street (Portion V)</b>										
VP_1215	Erection of Site Hoarding	26	22-Apr-14*	23-May-14						
VP_1205	Implement TTA	2	24-May-14	26-May-14						
VP_1225	Pre-boring for Sheet Pile	12	27-May-14	10-Jun-14						
VP_1235	TFS New Ret. Wall -sheet pile (400 m2)	12	11-Jun-14	24-Jun-14						
VP_1240	TFS New Ret. Wall - excavation	42	25-Jun-14	13-Aug-14						
VP_1260	TFS New Ret. Wall - base slab	42	10-Jul-14	27-Aug-14						
<b>Retaining Wall + Toe Wall at Hing Fat Street</b>										
<b>Tree Transplanting at Portion VIII (Tree Zone 20) (6 trees)</b>										

Activity ID	Activity Name	Original Duration	Start	Finish	2014					
					Apr	May	Jun	Jul	Aug	
VP_1130	Site Possession Portion VIII (486d) (Slope along Hing fat St)	0	21-Jul-14							◆ Site Possession Po
VP_1700	Preparation and Site Hoarding	36	21-Jul-14	30-Aug-14						
<b>Works in Victoria Park</b>										
<b>Re-Provisioning Works</b>										
<b>Bowling Green Office</b>										
<b>BGO - Construction Works</b>										
VP_1150	BGO - Underground utilities & foundation works	36	19-Mar-14 A	21-May-14						
VP_1180.01	BGO - Base Slab	24	22-May-14	19-Jun-14						
VP_1180.02	BGO - Walls	36	06-Jun-14	18-Jul-14						
VP_1180.03	BGO - Roof Slab + Plinths + Parapet	45	05-Jul-14	26-Aug-14						
<b>Tree Transplanting at Portion XIV (Victoria Park Open Space)</b>										
VP_1040	Tree Transplanting & Upkeep at Portion XIV	347	16-Oct-13 A	16-Dec-14						
<b>Mooring Components Upkeep (CBTS and ATS)</b>										
<b>Works for Public Works Regional Laboratory (North Lantau)</b>										